

Henry J Lyons

CORNELSCOURT
RESIDENTIAL DEVELOPMENT

November 2019

CORNEL LIVING LTD.

Housing Quality Assessment - Rev B

CORNELSCOURT



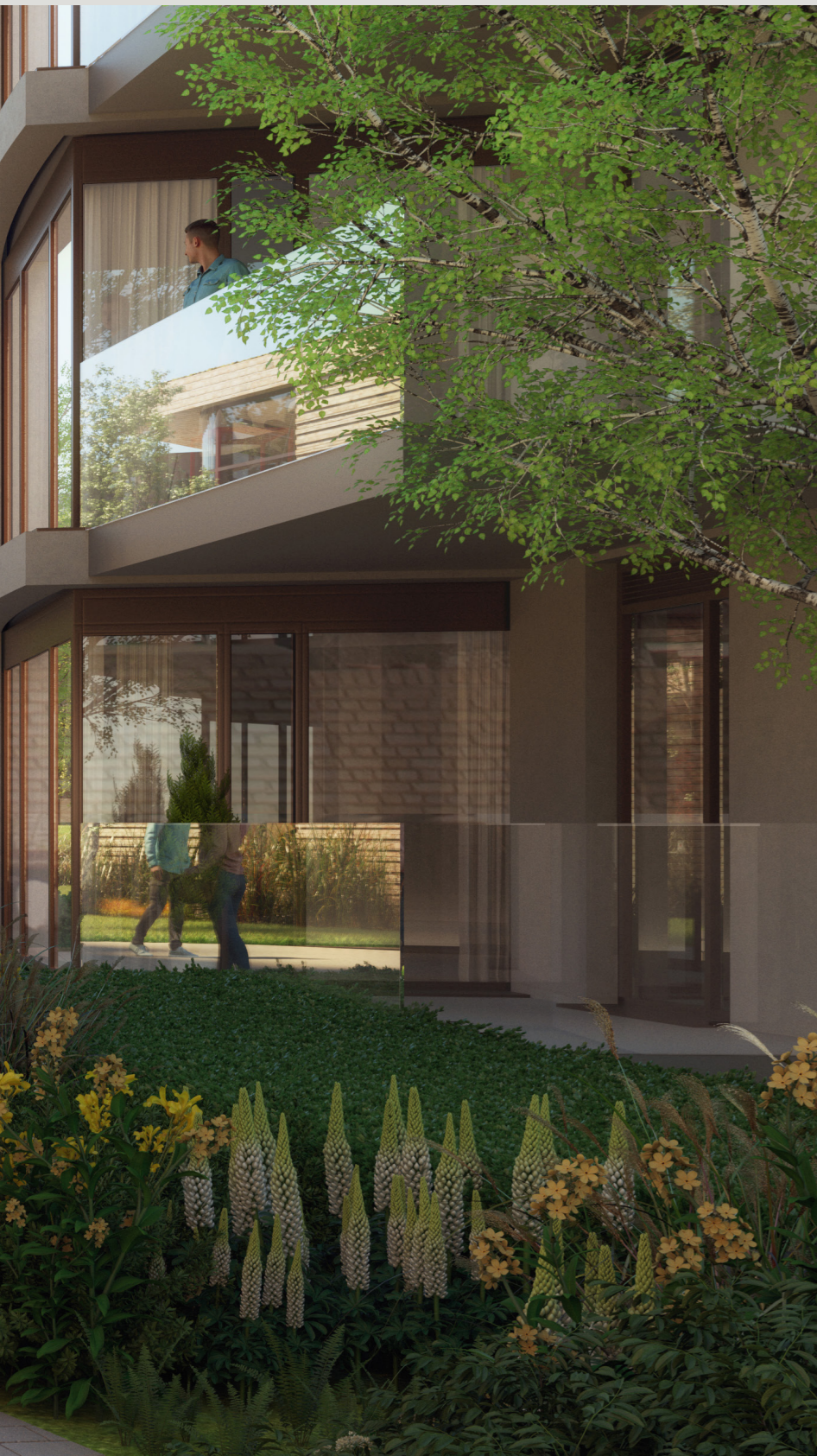
CONTENTS

1	INTRODUCTION & POLICY OVERVIEW	04
2	OVERVIEW & COMPLIANCE	08
3	COMMUNAL FACILITIES	12
4	APPENDIX A - UNIT SCHEDULES	16
5	APPENDIX B - UNIT TYPES	26



INTRODUCTION & POLICY OVERVIEW





1.1 Introduction



This Housing Quality Assessment Report has been prepared in support of an application submitted on behalf of Cornel Living Ltd (the applicant) for a new Strategic Housing Development at Cornelscourt Village off the N11. This report is a response to An Bord Pleanála's (ABP) specific information request:

Item 2; “A Housing Quality Assessment which provides the specific information regarding the proposed apartments required by the 2018 Guidelines on Design Standards for New Apartments. The assessment should also demonstrate how the proposed apartments comply with the various requirements of those guidelines, including its specific planning policy requirements. A building lifecycle report for the proposed apartments in accordance with Section 6.13 of the 2018 guidelines should also be submitted”

The proposal is for a Build to Rent (BTR) residential development located at Cornelscourt, accessed from Old Bray Road. The Strategic Housing Development proposes the provision of 468 units across 8 residential buildings and assorted houses, ranging in height from 1 to 12 storeys.

The Applicant is a significant investor in the Irish private rental market. It is in their long term interest to create an exemplar BTR scheme. In this context, their key to providing a high quality and successful residential development is quality design coupled with good management.

This report assesses the residential mix of apartments and houses within the proposed development against the provisions of the Sustainable Urban Housing: Design Standards for New Apartments Guidelines for Planning Authorities (March 2018).

Policy Overview

The document sets out the statutory context for the proposed development and the basis on which the housing quality assessment is carried out.

“Sustainable Urban Housing: Design Standards For New Apartments” - Guidelines For Planning Authorities, (March 2018)

These guidelines update the Sustainable Urban Housing: Design Standards for New Apartments guidelines, published in 2015.

The purpose of the 2015 apartment guidance was to reiterate ministerial guidance, setting out standards for apartment development, mainly in response to circumstances that had arisen whereby some local authority standards were at odds with national guidance.

The new Guidelines build on the content of the 2015 apartment guidance, much of which remains valid, particularly with regard to design quality safeguards such as internal space standards for 1-, 2- and 3-bedroom apartments, internal storage and amenity space.

These Guidelines update previous guidance in the context of greater evidence and knowledge of current and likely future housing demand in Ireland taking account of the Housing Agency National Statement on Housing Demand and Supply, the Government's action programme on housing and homelessness Rebuilding Ireland and Project Ireland 2040 and the National Planning Framework, published since the 2015 guidelines.

The Guidelines are supported by legislation which introduces new powers whereby the Minister may expressly state specific planning policy requirements (hereafter SPPRs) which must be applied by planning authorities, or An Bord Pleanála, in the exercise of their functions. Where SPPRs are stated in the Guidelines, the Minister intends that such requirements must take precedence over policies and objectives of development plans, local area plans or SDZ planning schemes.

The 2018 Guidelines specify planning policy requirements for:

- Internal space standards for different types of apartments, including studio apartments
- Dual aspect ratios
- Floor to ceiling height
- Apartments to stair/lift core ratios
- Storage spaces
- Amenity spaces including balconies/patios

- Room dimensions for certain rooms

Planning And Development (Amendment) Act 2015) - The Act provides for amendments to section 28, 34 and Part IX of the Planning and Development Act 2000, as amended.



View of Central Garden



View of Central Garden

1.2 Policy Overview

Cornelscourt Scheme

The proposal is in accordance with SPPR 7 of the Apartment Guidelines:

(i) No restrictions on dwelling mix and all other requirements of these Guidelines shall apply, unless specified otherwise;

(ii) Flexibility shall apply in relation to the provision of a proportion of the storage and private amenity space associated with individual units as set out in Appendix A and in relation to the provision of all of the communal amenity space as set out in Appendix A, on the basis of the provision of alternative, compensatory communal support facilities and amenities within the development. This shall be at the discretion of the planning authority. In all cases the obligation will be on the project proposer to demonstrate the overall quality of the facilities provided and that residents will enjoy an enhanced overall standard of amenity;

(iii) There shall be a default of minimal or significantly reduced car parking provision on the basis of BTR development being more suitable for central locations and/or proximity to public transport services. The requirement for a BTR scheme to have a strong central management regime is intended to contribute to the capacity to establish and operate shared mobility measures;

iv) The requirement that the majority of all apartments in a proposed scheme exceed the minimum floor area standards by a minimum of 10% shall not apply to BTR schemes;

(v) The requirement for a maximum of 12 apartments per floor per core shall not apply to BTR schemes, subject to overall design quality and compliance with building regulations.

DLRCC Apartment Standards Now Superseded By The Guidelines

DLRCC must have regard to the Guidelines and must comply with the SPPRs outlined in the Guidelines.

The County Development Plan includes an 'Advisory Note' acknowledging the new Guidelines (and associated legislation) and stating that these will take precedence over the Development Plan where SPPRs are concerned.

Based on a review of the Dun Laoghaire Rathdown County Development Plan 2016-2022, the list below is a summary of the main provision guidelines.

In summary, SPPRs supersede the following provisions of the current County Development Plan;

- Section 8.2.3.3 (ii) Dual Aspect
- Section 8.2.3.3 (v) Internal Storage
- Section 8.2.3.3 (vii) Minimum Apartment Floor Areas
- Section 8.2.8.4 (iv) Private Open Space for Apartment Development



View of Communal Street





OVERVIEW & COMPLIANCE





2

2.1 Overview of Compliance

This Housing Quality Assessment provides an assessment of compliance with requirements under the 2018 Sustainable Urban Housing Guidelines (SUHG).

Qualitative aspects such as the Residential Conceptual Design approach are covered under the Architectural Design Statement.

The SUHG cover a variety of key topics, an overview of each is provided below to provide a summary to the data provided in the Assessment tables.

Unit Mix

As stated within the SPPR 8; “No restrictions on dwelling mix and all other requirements of these guidelines shall apply, unless specified otherwise”. The mix of units for the Cornelscourt Residential Development is outlined in the table below:

Units	Studio	1 Bed	2 Bed	3 Bed	Avg. Unit GFA	Net (Sq. M)
468	41	263	136	28	77.2	

Apartment and Houses’ Floor Areas

The minimum apartment floor areas have all been met. In addition to this, 94% of the units exceed the minimum floor areas by at least 10%.

Aspect

With regard to the Guidelines in urban locations, the minimum number of dual aspect apartments that may be provided in any single apartment scheme shall be 33%. A total of 259 of the 468 units proposed have the benefit of dual aspect equating to 55.3% of the units, which is an exceptional level of dual aspect within a BTR scheme. In some cases, units have the benefit of triple aspect. When considering apartment units only, the dual aspect ratio is 51.9% (243 of 452 apartment units), again an exceptional level of quality dual aspect units in accordance with national planning policy standards.

The height, scale, and massing of each building has been carefully

designed to correspond with the orientation of the site. By leaving taller elements of the development to the north adjacent the N11, with low-level units to the south, daylight and sunlight are invited into the courtyards and public amenity spaces. The three taller elements have uninterrupted views to the Dublin Mountains and Bay. The curvilinear form of the lower buildings creates sunlit courtyards and areas of public realm for occupants to enjoy. In further cognisance of formulating height and scale to reflect existing characteristics, setbacks have been included in Building D and Building E to further reduce the visual mass of the buildings. These buildings are significantly lower than the taller elements which promote penetration of natural light into the courtyards. Variations in façade depth and the stepping of the building line for balconies and terraces further help to mitigate the massing and scale.

In addition, each building has excellent daylight and vista opportunities. The design of the scheme has sought to maximise the quantity of Dual Aspect units. Naturally high density multi-storey development with perimeter block patterns partially curtails the quantity of dual aspect units that can be achieved. In an attempt to maximise the provision, we have employed a variety of mechanisms including;

- Provision of Dual Aspect Units at all corners of the built form
- Providing large rebates, in particular along north facing facades in order to activate dual aspect views
- Providing through view dual aspect units along North/South facing elevations

In the Cornelscourt Residential Development there are no single aspect North facing units. Unit aspects are identified in the accompanying matrix setting out the compliance for each unit within this zone.

		of which dual	
TOTAL APARTMENT BLOCKS	-1	7	0%
	0	45	70%
	1	45	65%
	2	49	66%
	3	41	60%
	4	12	31%
	5	12	31%
	6	8	31%
	7	8	36%
	8	6	38%
	9	2	29%
	10	4	44%
	11	4	44%
SUBTOTAL GFA		243	51.9%
Unit Mix %			
HOUSING BLOCK			
		10	2.1%
	SUBTOTAL GFA		
BUNGALOW BLOCK			
		6	1.3%
	SUBTOTAL GFA		259

Dual Aspect

Floor to Ceiling Height

Currently the guidelines promote higher floor to ceiling heights for ground floor apartments.

Within the development we are providing the minimum 2.7m floor to ceiling height for the ground floor apartments and where appropriate greater floor to ceiling heights in open plan living areas. Floor to ceiling heights for all floors above ground floor level achieve greater floor to ceiling heights than the minimum 2.4m.

Floor to ceiling heights are in accordance with the Building Regulations, and the absolute minimum provided is 2.4m, and typically only found in Bathrooms and occasionally Kitchens.

Lift and Stair Cores

As per the guidelines we have sought to maximise the number of apartments per floor per stair/lift core to assist in ensuring that service charges and maintenance costs faced by residents into the future are kept at reasonable levels.

Having liaised with fire safety engineers we are achieving typically 13 apartments per core for parts of the residential scheme and in most instances multiple units are served by more than a single core in order to assist ease of circulation and alternative means of escape, however in all of these instances, the ratio of 13 units per core is not exceeded.

Internal Storage

The Apartments are designed to be practical, feel generous, and make the most of their views and orientation. The proposed scheme's typical apartment is an open plan with a central living space. From the compact cores, the apartments are configured to provide a generous entrance leading straight to living rooms to ensure a pleasant sequence of spaces on arrival home. Kitchens are generally part of the living space, and utilities cater to noisy appliances and clutter. The storage rooms are located close to the apartments' front door; the storage spaces are in accordance with the minimum provision requirements throughout the units.

Private Amenity Space

The minimum private amenity areas have all been met. In addition to

this, the majority of the units exceed the minimum private amenity area requirements.

As per the guidelines private amenity space is provided to units at ground floor as an adjoining patio or terrace area and for the upper floors is provided by way of balconies to the unit. The balconies all provide the required minimum depth of at least 1.5m and are deeper where possible. In most cases the balconies are accessed off the living space and where possible also include an access from a bedroom.

Security Considerations

The design of the blocks provides both external passive surveillance of the surrounding spaces and internally where the central courtyards are both secure and overlooked.

For the internal ground floor apartments a private buffer zone has been incorporated into the design and realised with the landscape architects along with the appropriate boundary treatments. This allows passive surveillance of the adjacent communal gardens and public walkways around each of the apartment buildings. Ground floor units externally have an additional landscaped buffer beyond the private amenity space to enhance the sense of privacy, further providing an additional element of separation and security to the ground floor units in that zone.

The main entrance reception lobby located in Building F contains a generous double height space. A concierge in this central lobby will provide services and added security for all residents. At points around the perimeter of the other blocks the entry points to all stair cores will be well indicated and highly visible.

Daylight / Sunlight And Shadow Analysis

All the residential buildings have been designed in accordance with the relevant guidelines in relation to Daylight and Sunlight. For full details please refer to the 'Daylight & Shadow Report' by Integrated Environmental Solutions Limited.



View of Central Garden from Apartment Balcony

3

COMMUNAL FACILITIES





3.1 Communal Facilities

3

Access & Services

The proposals are designed in accordance with Part M of the Building Regulations, including Universal Access requirements. Internally circulation corridors exceed the minimum width requirements, and are punctuated by various increases in depth to articulate the corridor spaces. Service ducts are accessible from common areas as far as practicable and within apartments service runs line up to avoid any cross over to adjacent units.

Facilities

A large emphasis is placed on current best practice for provision of communal facilities. A range of residential amenities (total 756 sq. m (total includes the central amenity space of 458 sq m; office amenity space of 149 sq m and concierge amenity space of 149 sq m)), communal amenity spaces and private balconies and terraces create a high quality living environment. A concierge is located at the main pedestrian and vehicular entrance (Fig.3.1.1); providing services for the residents and passive surveillance for all the residents. A shared office space is located at the entrance to allow residents the opportunity to work from home.

Another 458 sq.m of residential amenities are located within the Central Garden (Fig.3.1.2) next to the gable end of Building B. This will include a gym, resident's lounge, reading room and terrace. The amenity building is accessed from podium level allowing all the residents easy access to the central facilities. It's located centrally within the proposal, benefitting from a pleasant aspect with views into the Central Garden.

Communal Amenity Space

Communal Open space is provided as fully accessible and secure private courtyard gardens. The minimum area requirements are met and significantly exceeded in the Cornelscourt Residential Development. The minimum requirement is approx. 3223 sqm and the provided open space area is approx. 7511 sqm.

Refuse Storage

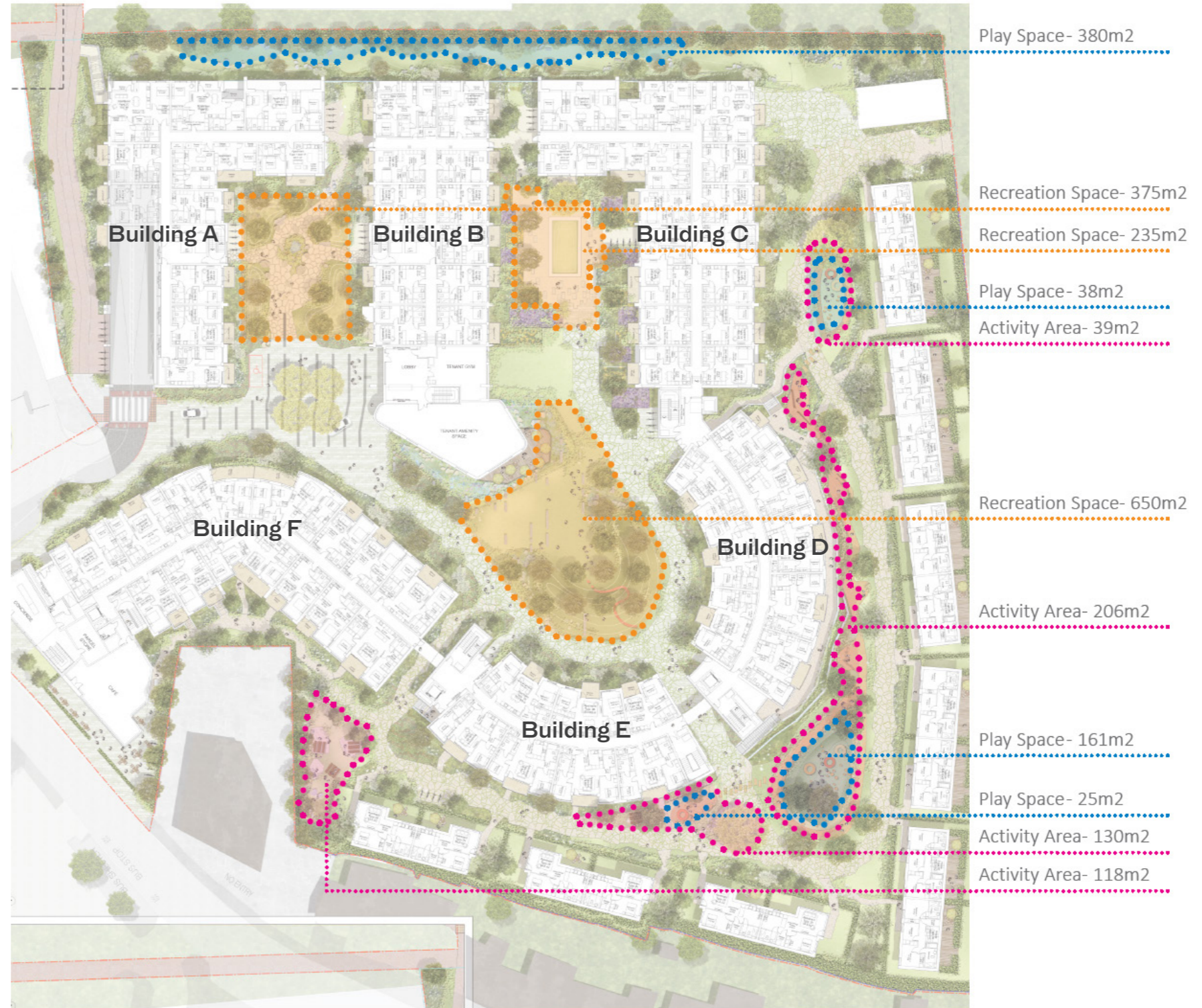
Dedicated refuse storage spaces are provided throughout the overall scheme, please refer to the Waste Management Plan by Byrne Consulting for details of same.



Fig. 3.1.1: Proposed Residential Development at Cornelscourt - Concierge



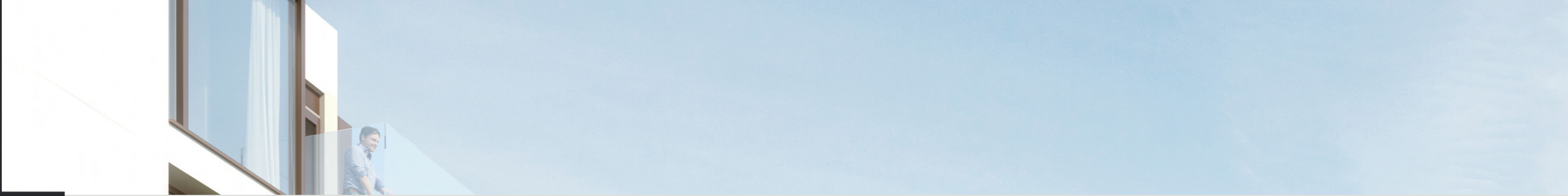
Fig. 3.1.2: Proposed Residential Development at Cornelscourt - Central Amenity



-  Recreation Space
1,260m²
-  Play Space- 604m²
-  Activity Areas- 493m²

Fig. 3.1.3: Proposed Residential Development at Cornelscourt - Communal Open Space





APPENDIX A - UNIT SCHEDULES





PRINCIPAL STATISTICS							BEDROOMS				LIVING / DINING	AMENITY / STORAGE		OTHER FEATURES		
Unit Number	Unit Type	Bedroom Count	Unit Description	Unit Area	Minimum Unit Area	Oversized Unit	Bedroom 1 Area	Bedroom 2 Area	Bedroom 3 Area	Aggregate Bedroom Area	Provided Living/Kitchen Area	Aggregate Storage Area	Private Amenity Area	Comments	View Aspect	Orientation
1I																
A1-001	1A	1	1 Bedroom Apartment	48.60 m ²	45.00 m ²	Yes	11.70 m ²	0.00 m ²	0.00 m ²	11.70 m ²	26.70 m ²	3.70 m ²	6.10 m ²		DUAL	NW & SW
A1-002	1A	1	1 Bedroom Apartment	48.60 m ²	45.00 m ²	Yes	11.70 m ²	0.00 m ²	0.00 m ²	11.70 m ²	26.70 m ²	3.70 m ²	6.10 m ²		SINGLE	NW
A1-003	2C	2	2 Bedroom Apartment	79.80 m ²	73.00 m ²	Yes	13.00 m ²	11.40 m ²	0.00 m ²	24.40 m ²	34.10 m ²	6.20 m ²	10.70 m ²		DUAL	NE & NW
A1-004	2D	2	2 Bedroom Apartment	73.00 m ²	73.00 m ²	No	12.50 m ²	13.00 m ²	0.00 m ²	25.50 m ²	30.00 m ²	6.00 m ²	9.70 m ²	2.5 sqm Additional storage in basement	DUAL	NE & SE
A1-005	2J	2	2 Bedroom Apartment	74.00 m ²	73.00 m ²	Yes	11.40 m ²	13.60 m ²	0.00 m ²	25.00 m ²	30.00 m ²	6.00 m ²	19.70 m ²		DUAL	NE & SE
A1-006	1F	1	1 Bedroom Apartment	48.60 m ²	45.00 m ²	No	12.30 m ²	0.00 m ²	0.00 m ²	12.30 m ²	27.50 m ²	3.40 m ²	5.30 m ²		DUAL	SW & SW
A1-007	2I	2	2 Bedroom Apartment	73.50 m ²	73.00 m ²	Yes	11.40 m ²	13.00 m ²	0.00 m ²	24.40 m ²	30.00 m ²	6.00 m ²	9.60 m ²		DUAL	SE & SW
A1-008	0A	0	Studio Apartment	40.90 m ²	37.00 m ²	Yes	0.00 m ²	0.00 m ²	0.00 m ²	-	31.50 m ²	3.00 m ²	5.80 m ²		SINGLE	SE
A1-009	1A	1	1 Bedroom Apartment	48.60 m ²	45.00 m ²	Yes	11.70 m ²	0.00 m ²	0.00 m ²	11.70 m ²	26.70 m ²	3.70 m ²	6.10 m ²		SINGLE	SE
A1-010	1A	1	1 Bedroom Apartment	48.60 m ²	45.00 m ²	Yes	11.70 m ²	0.00 m ²	0.00 m ²	11.70 m ²	26.70 m ²	3.70 m ²	6.10 m ²		SINGLE	SE
A1-011	1A	1	1 Bedroom Apartment	48.60 m ²	45.00 m ²	Yes	11.70 m ²	0.00 m ²	0.00 m ²	11.70 m ²	26.70 m ²	3.70 m ²	6.10 m ²		DUAL	SW & SE
A1-1001	1B	1	1 Bedroom Apartment	45.90 m ²	45.00 m ²	Yes	11.40 m ²	0.00 m ²	0.00 m ²	11.40 m ²	23.60 m ²	3.10 m ²	7.30 m ²		SINGLE	NW
A1-1002	1C	1	1 Bedroom Apartment	49.30 m ²	45.00 m ²	Yes	11.70 m ²	0.00 m ²	0.00 m ²	11.70 m ²	27.20 m ²	3.70 m ²	6.70 m ²		SINGLE	NW
A1-1003	1C	1	1 Bedroom Apartment	49.30 m ²	45.00 m ²	Yes	11.70 m ²	0.00 m ²	0.00 m ²	11.70 m ²	27.20 m ²	3.70 m ²	6.70 m ²		SINGLE	NW
A1-1004	2Y	2	2 Bedroom Apartment	82.90 m ²	73.00 m ²	Yes	11.50 m ²	13.20 m ²	0.00 m ²	24.70 m ²	30.00 m ²	6.10 m ²	12.40 m ²		DUAL	NE & NW
A1-1005	2G	2	2 Bedroom Apartment	77.70 m ²	73.00 m ²	Yes	11.40 m ²	13.60 m ²	0.00 m ²	25.00 m ²	30.00 m ²	6.20 m ²	12.30 m ²	2.1 sqm Additional storage in basement	DUAL	NE & SE
A1-1006	1C	1	1 Bedroom Apartment	49.30 m ²	45.00 m ²	Yes	11.70 m ²	0.00 m ²	0.00 m ²	11.70 m ²	27.20 m ²	3.70 m ²	6.70 m ²		SINGLE	SE
A1-1007	0B	0	Studio Apartment	41.20 m ²	37.00 m ²	Yes	0.00 m ²	0.00 m ²	0.00 m ²	-	31.40 m ²	3.00 m ²	5.70 m ²		SINGLE	SE
A1-1008	1J	1	1 Bedroom Apartment	51.50 m ²	45.00 m ²	Yes	11.70 m ²	0.00 m ²	0.00 m ²	11.70 m ²	29.50 m ²	3.70 m ²	7.20 m ²		DUAL	SE & SW
A1-1009	1J	1	1 Bedroom Apartment	51.50 m ²	45.00 m ²	Yes	11.70 m ²	0.00 m ²	0.00 m ²	11.70 m ²	29.50 m ²	3.70 m ²	7.20 m ²		DUAL	SE & SW
A1-101	1O	1	1 Bedroom Apartment	45.20 m ²	45.00 m ²	Yes	11.40 m ²	0.00 m ²	0.00 m ²	11.40 m ²	23.00 m ²	3.10 m ²	5.70 m ²		SINGLE	NW
A1-102	1A	1	1 Bedroom Apartment	48.60 m ²	45.00 m ²	Yes	11.70 m ²	0.00 m ²	0.00 m ²	11.70 m ²	26.70 m ²	3.70 m ²	6.10 m ²		SINGLE	NW
A1-103	1A	1	1 Bedroom Apartment	48.60 m ²	45.00 m ²	Yes	11.70 m ²	0.00 m ²	0.00 m ²	11.70 m ²	26.70 m ²	3.70 m ²	6.10 m ²		SINGLE	NW
A1-104	2C	2	2 Bedroom Apartment	79.80 m ²	73.00 m ²	Yes	13.00 m ²	11.40 m ²	0.00 m ²	24.40 m ²	34.10 m ²	6.20 m ²	10.70 m ²		DUAL	NE & NW
A1-105	2F	2	2 Bedroom Apartment	73.00 m ²	73.00 m ²	No	12.50 m ²	13.00 m ²	0.00 m ²	25.50 m ²	30.00 m ²	6.00 m ²	9.70 m ²	2.9 sqm additional storage in basement	DUAL	NE & SE
A1-106	2J	2	2 Bedroom Apartment	74.00 m ²	73.00 m ²	Yes	11.40 m ²	13.60 m ²	0.00 m ²	25.00 m ²	30.00 m ²	6.00 m ²	19.70 m ²		DUAL	NE & SE
A1-107	1F	1	1 Bedroom Apartment	48.60 m ²	45.00 m ²	Yes	11.40 m ²	0.00 m ²	0.00 m ²	11.40 m ²	27.50 m ²	3.30 m ²	7.90 m ²		DUAL	SW & SE
A1-108	2I	2	2 Bedroom Apartment	73.50 m ²	73.00 m ²	Yes	11.40 m ²	13.00 m ²	0.00 m ²	24.40 m ²	30.00 m ²	6.00 m ²	9.60 m ²		DUAL	SE & SW
A1-109	0A	0	Studio Apartment	40.90 m ²	37.00 m ²	Yes	0.00 m ²	0.00 m ²	0.00 m ²	-	31.50 m ²	3.00 m ²	5.80 m ²		SINGLE	SE
A1-110	1A	1	1 Bedroom Apartment	48.60 m ²	45.00 m ²	Yes	11.70 m ²	0.00 m ²	0.00 m ²	11.70 m ²	26.70 m ²	3.70 m ²	6.10 m ²		SINGLE	SE
A1-1101	1P	1	1 Bedroom Apartment	45.20 m ²	45.00 m ²	Yes	11.40 m ²	0.00 m ²	0.00 m ²	11.40 m ²	23.00 m ²	3.10 m ²	10.80 m ²		SINGLE	NW
A1-1102	1A	1	1 Bedroom Apartment	48.60 m ²	45.00 m ²	Yes	11.70 m ²	0.00 m ²	0.00 m ²	11.70 m ²	26.70 m ²	3.70 m ²	10.80 m ²		SINGLE	NW
A1-1103	1A	1	1 Bedroom Apartment	48.60 m ²	45.00 m ²	Yes	11.70 m ²	0.00 m ²	0.00 m ²	11.70 m ²	26.70 m ²	3.70 m ²	10.80 m ²		SINGLE	NW
A1-1104	2V	2	2 Bedroom Apartment	82.00 m ²	73.00 m ²	Yes	11.40 m ²	13.10 m ²	0.00 m ²	24.50 m ²	30.00 m ²	6.20 m ²	16.20 m ²		DUAL	NE & NW
A1-1105	2H	2	2 Bedroom Apartment	76.30 m ²	73.00 m ²	Yes	11.40 m ²	14.50 m ²	0.00 m ²	25.90 m ²	30.00 m ²	6.00 m ²	12.30 m ²	2.8 sqm Additional storage in basement	DUAL	NE & SE
A1-1106	1A	1	1 Bedroom Apartment	48.60 m ²	45.00 m ²	Yes	11.70 m ²	0.00 m ²	0.00 m ²	11.70 m ²	26.70 m ²	3.70 m ²	10.80 m ²		SINGLE	SE
A1-1107	0A	0	Studio Apartment	40.90 m ²	37.00 m ²	Yes	0.00 m ²	0.00 m ²	0.00 m ²	-	31.50 m ²	3.00 m ²	10.80 m ²		SINGLE	SE
A1-1108	1M	1	1 Bedroom Apartment	51.50 m ²	45.00 m ²	Yes	11.50 m ²	0.00 m ²	0.00 m ²	11.50 m ²	27.90 m ²	3.00 m ²	10.80 m ²		DUAL	SE & SW
A1-1109	1M	1	1 Bedroom Apartment	51.50 m ²	45.00 m ²	Yes	11.50 m ²	0.00 m ²	0.00 m ²	11.50 m ²	27.90 m ²	3.00 m ²	10.80 m ²		DUAL	NW & SW
A1-111	1K	1	1 Bedroom Apartment	48.60 m ²	45.00 m ²	No	11.70 m ²	0.00 m ²	0.00 m ²	11.70 m ²	26.70 m ²	3.70 m ²	6.10 m ²		SINGLE	SE
A1-112	1J	1	1 Bedroom Apartment	50.50 m ²	45.00 m ²	Yes	11.70 m ²	0.00 m ²	0.00 m ²	11.70 m ²	28.90 m ²	3.00 m ²	6.10 m ²		DUAL	SE & SW
A1-113	1I	1	1 Bedroom Apartment	50.50 m ²	45.00 m ²	Yes	11.70 m ²	0.00 m ²	0.00 m ²	11.70 m ²	28.90 m ²	3.00 m ²	6.10 m ²		DUAL	NW & SW
A1-114	1K	1	1 Bedroom Apartment	48.60 m ²	45.00 m ²	No	11.70 m ²	0.00 m ²	0.00 m ²	11.70 m ²	26.70 m ²	3.70 m ²	6.10 m ²		SINGLE	NW
A1-115	1A	1	1 Bedroom Apartment	48.60 m ²	45.00 m ²	Yes	11.70 m ²	0.00 m ²	0.00 m ²	11.70 m ²	26.70 m ²	3.70 m ²	6.10 m ²		SINGLE	NW
A1-201	1B	1	1 Bedroom Apartment	45.90 m ²	45.00 m ²	Yes	11.40 m ²	0.00 m ²	0.00 m ²	11.40 m ²	23.60 m ²	3.10 m ²	7.30 m ²		SINGLE	NW
A1-202	1C	1	1 Bedroom Apartment	49.30 m ²	45.00 m ²	Yes	11.70 m ²	0.00 m ²	0.00 m ²	11.70 m ²	27.20 m ²	3.70 m ²	6.70 m ²		SINGLE	NW
A1-203	1C	1	1 Bedroom Apartment	49.30 m ²	45.00 m ²	Yes	11.70 m ²	0.00 m ²	0.00 m ²	11.70 m ²	27.20 m ²	3.70 m ²	6.70 m ²		SINGLE	NW
A1-204	2Y	2	2 Bedroom Apartment	82.90 m ²	73.00 m ²	Yes	11.50 m ²	13.20 m ²	0.00 m ²	24.70 m ²	30.00 m ²	6.10 m ²	12.40 m ²		DUAL	NE & NW
A1-205	2F	2	2 Bedroom Apartment	73.00 m ²	73.00 m ²	No	12.50 m ²	13.00 m ²	0.00 m ²	25.50 m ²	30.00 m ²	6.00 m ²	9.70 m ²	2.9 sqm additional storage in basement	DUAL	NE & SE
A1-206	2J	2	2 Bedroom Apartment	74.00 m ²	73.00 m ²	Yes	11.40 m ²	13.60 m ²	0.00 m ²	25.00 m ²	30.00 m ²	6.00 m ²	19.70 m ²		DUAL	NE & SE
A1-207	1F	1	1 Bedroom Apartment	48.60 m ²	45.00 m ²	Yes	11.40 m ²	0.00 m ²	0.00 m ²	11.40 m ²	27.50 m ²	3.30 m ²	7.90 m ²		DUAL	SW & SE
A1-208	2I	2	2 Bedroom Apartment	73.50 m ²	73.00 m ²	Yes	11.40 m ²	13.00 m ²	0.00 m ²	24.40 m ²	30.00 m ²	6.00 m ²	9.60 m ²		DUAL	SE & SW
A1-209	0B	0	Studio Apartment	41.20 m ²	37.00 m ²	Yes	0.00 m ²	0.00 m ²	0.00 m ²	-	31.40 m ²	3.00 m ²	5.70 m ²		SINGLE	SE
A1-210	1C	1	1 Bedroom Apartment	49.30 m ²	45.00 m ²	Yes	11.70 m ²	0.00 m ²	0.00 m ²	11.70 m ²	27.20 m ²	3.70 m ²	6.70 m ²		SINGLE	SE
A1-211	1K	1	1 Bedroom Apartment	48.60 m ²	45.00 m ²	No	11.70 m ²	0.00 m ²	0.00 m ²	11.70 m ²	26.70 m ²	3.70 m ²	6.10 m ²		SINGLE	SE
A1-212	1I	1	1 Bedroom Apartment	50.50 m ²	45.00 m ²	Yes	11.70 m ²	0.00 m ²	0.00 m ²	11.70 m ²	28.90 m ²	3.00 m ²	6.10 m ²		DUAL	SE & SW
A1-213	1I	1	1 Bedroom Apartment	50.50 m ²	45.00 m ²	Yes	11.70 m ²	0.00 m ²	0.00 m ²	11.70 m ²	28.90 m ²	3.00 m ²	6.10 m ²		DUAL	NW & SW
A1-214	1K	1	1 Bedroom Apartment	48.60 m ²	45.00 m ²	No	11.70 m ²	0.00 m ²	0.00 m ²	11.70 m ²	26.70 m ²					

PRINCIPAL STATISTICS							BEDROOMS				LIVING / DINING	AMENITY / STORAGE		OTHER FEATURES		
Unit Number	Unit Type	Bedroom Count	Unit Description	Unit Area	Minimum Unit Area	Oversized Unit	Bedroom 1 Area	Bedroom 2 Area	Bedroom 3 Area	Aggregate Bedroom Area	Provided Living/Kitchen Area	Aggregate Storage Area	Private Amenity Area	Comments	View Aspect	Orientation
11																
B1-606	1C	1	1 Bedroom Apartment	49.30 m ²	45.00 m ²	Yes	11.70 m ²	0.00 m ²	0.00 m ²	11.70 m ²	27.20 m ²	3.70 m ²	6.70 m ²		SINGLE	SE
B1-607	1K	1	1 Bedroom Apartment	48.60 m ²	45.00 m ²	No	11.70 m ²	0.00 m ²	0.00 m ²	11.40 m ²	26.70 m ²	3.70 m ²	6.10 m ²		SINGLE	SE
B1-608	1I	1	1 Bedroom Apartment	50.50 m ²	45.00 m ²	Yes	11.70 m ²	0.00 m ²	0.00 m ²	11.70 m ²	28.90 m ²	3.00 m ²	6.10 m ²		DUAL	SE & SW
B1-609	1I	1	1 Bedroom Apartment	50.50 m ²	45.00 m ²	Yes	11.70 m ²	0.00 m ²	0.00 m ²	11.70 m ²	28.90 m ²	3.00 m ²	6.10 m ²		DUAL	NW & SW
B1-610	1K	1	1 Bedroom Apartment	48.60 m ²	45.00 m ²	No	11.70 m ²	0.00 m ²	0.00 m ²	11.40 m ²	26.70 m ²	3.70 m ²	6.10 m ²		SINGLE	NW
B1-611	1C	1	1 Bedroom Apartment	49.30 m ²	45.00 m ²	Yes	11.70 m ²	0.00 m ²	0.00 m ²	11.70 m ²	27.20 m ²	3.70 m ²	6.70 m ²		SINGLE	NW
B1-612	0B	0	Studio Apartment	41.20 m ²	37.00 m ²	Yes	0.00 m ²	0.00 m ²	0.00 m ²	-	31.40 m ²	3.00 m ²	5.70 m ²		SINGLE	NW
B1-613	1C	1	1 Bedroom Apartment	49.30 m ²	45.00 m ²	Yes	11.70 m ²	0.00 m ²	0.00 m ²	11.70 m ²	27.20 m ²	3.70 m ²	6.70 m ²		SINGLE	NW
B1-701	3F	3	3 Bedroom Apartment	91.10 m ²	90.00 m ²	Yes	11.40 m ²	13.80 m ²	7.40 m ²	32.60 m ²	36.00 m ²	9.00 m ²	12.30 m ²	3.1 sqm Additional storage in basement	DUAL	NE & NW
B1-702	2R	2	2 Bedroom Apartment	77.00 m ²	73.00 m ²	Yes	11.40 m ²	13.30 m ²	0.00 m ²	24.70 m ²	30.00 m ²	6.00 m ²	12.30 m ²	0.5 sqm Additional storage in basement	DUAL	NE & SE
B1-703	1C	1	1 Bedroom Apartment	49.30 m ²	45.00 m ²	Yes	11.70 m ²	0.00 m ²	0.00 m ²	11.70 m ²	27.20 m ²	3.70 m ²	6.70 m ²		SINGLE	SE
B1-704	0B	0	Studio Apartment	41.20 m ²	37.00 m ²	Yes	0.00 m ²	0.00 m ²	0.00 m ²	-	31.40 m ²	3.00 m ²	5.70 m ²		SINGLE	SE
B1-705	1B	1	1 Bedroom Apartment	45.90 m ²	45.00 m ²	Yes	11.40 m ²	0.00 m ²	0.00 m ²	-	23.60 m ²	3.10 m ²	7.30 m ²		SINGLE	SE
B1-706	2O	2	2 Bedroom Duplex Apt	109.00 m ²	73.00 m ²	Yes	12.40 m ²	19.80 m ²	0.00 m ²	32.20 m ²	31.60 m ²	7.20 m ²	18.60 m ²		DUAL	SE & SW
B1-707	2O	2	2 Bedroom Duplex Apt	109.00 m ²	73.00 m ²	Yes	12.40 m ²	19.80 m ²	0.00 m ²	32.20 m ²	31.60 m ²	7.20 m ²	18.60 m ²		DUAL	NW & SW
B1-708	0B	0	Studio Apartment	41.20 m ²	37.00 m ²	Yes	0.00 m ²	0.00 m ²	0.00 m ²	-	31.40 m ²	3.00 m ²	5.70 m ²		SINGLE	NW
B1-709	1C	1	1 Bedroom Apartment	49.30 m ²	45.00 m ²	Yes	11.70 m ²	0.00 m ²	0.00 m ²	11.70 m ²	27.20 m ²	3.70 m ²	6.70 m ²		SINGLE	NW
B1-801	3A	3	3 Bedroom Apartment	90.00 m ²	90.00 m ²	No	11.40 m ²	13.80 m ²	7.40 m ²	32.60 m ²	36.00 m ²	9.00 m ²	17.80 m ²	3.1 sqm Additional storage in basement	DUAL	NE & NW
B1-802	2W	2	2 Bedroom Apartment	76.40 m ²	73.00 m ²	Yes	11.40 m ²	13.00 m ²	0.00 m ²	24.40 m ²	32.70 m ²	6.20 m ²	17.80 m ²		DUAL	NE & SE
B1-803	1A	1	1 Bedroom Apartment	48.60 m ²	45.00 m ²	Yes	11.70 m ²	0.00 m ²	0.00 m ²	11.70 m ²	26.70 m ²	3.70 m ²	10.80 m ²		SINGLE	SE
B1-804	0A	0	Studio Apartment	40.90 m ²	37.00 m ²	Yes	0.00 m ²	0.00 m ²	0.00 m ²	-	31.50 m ²	3.00 m ²	11.00 m ²		SINGLE	SE
B1-805	1P	1	1 Bedroom Apartment	45.20 m ²	45.00 m ²	Yes	11.40 m ²	0.00 m ²	0.00 m ²	-	23.00 m ²	3.10 m ²	7.30 m ²		SINGLE	SE
B1-806	0A	0	Studio Apartment	40.90 m ²	37.00 m ²	Yes	0.00 m ²	0.00 m ²	0.00 m ²	-	31.50 m ²	3.00 m ²	10.60 m ²		SINGLE	NW
B1-807	1A	1	1 Bedroom Apartment	48.60 m ²	45.00 m ²	Yes	11.70 m ²	0.00 m ²	0.00 m ²	11.70 m ²	26.70 m ²	3.70 m ²	9.00 m ²		SINGLE	NW
C1-001	2J	2	2 Bedroom Apartment	74.00 m ²	73.00 m ²	Yes	11.40 m ²	13.60 m ²	0.00 m ²	25.00 m ²	30.00 m ²	6.00 m ²	19.70 m ²		DUAL	NE & NW
C1-001	2J	2	2 Bedroom Apartment	74.00 m ²	73.00 m ²	Yes	11.40 m ²	13.60 m ²	0.00 m ²	25.00 m ²	30.00 m ²	6.00 m ²	19.70 m ²		DUAL	NE & NW
C1-002	2D	2	2 Bedroom Apartment	73.00 m ²	73.00 m ²	No	12.50 m ²	13.00 m ²	0.00 m ²	25.50 m ²	30.00 m ²	6.00 m ²	9.70 m ²	2.5 sqm Additional storage in basement	DUAL	NE & NW
C1-003	2C	2	2 Bedroom Apartment	79.80 m ²	73.00 m ²	Yes	13.00 m ²	11.40 m ²	0.00 m ²	24.40 m ²	34.10 m ²	6.20 m ²	10.70 m ²		DUAL	NE & SE
C1-004	1A	1	1 Bedroom Apartment	48.60 m ²	45.00 m ²	Yes	11.70 m ²	0.00 m ²	0.00 m ²	11.70 m ²	26.70 m ²	3.70 m ²	6.10 m ²		SINGLE	SE
C1-005	1A	1	1 Bedroom Apartment	48.60 m ²	45.00 m ²	Yes	11.70 m ²	0.00 m ²	0.00 m ²	11.70 m ²	26.70 m ²	3.70 m ²	6.10 m ²		SINGLE	SE
C1-006	1A	1	1 Bedroom Apartment	48.60 m ²	45.00 m ²	Yes	11.70 m ²	0.00 m ²	0.00 m ²	11.70 m ²	26.70 m ²	3.70 m ²	6.10 m ²		SINGLE	SE
C1-007	1A	1	1 Bedroom Apartment	48.60 m ²	45.00 m ²	Yes	11.70 m ²	0.00 m ²	0.00 m ²	11.70 m ²	26.70 m ²	3.70 m ²	6.10 m ²		SINGLE	SE
C1-008	1L	1	1 Bedroom Apartment	48.60 m ²	45.00 m ²	Yes	11.50 m ²	0.00 m ²	0.00 m ²	11.50 m ²	26.70 m ²	3.70 m ²	6.10 m ²		DUAL	SE & SW
C1-009	1L	1	1 Bedroom Apartment	48.60 m ²	45.00 m ²	Yes	11.50 m ²	0.00 m ²	0.00 m ²	11.50 m ²	26.70 m ²	3.70 m ²	6.10 m ²		DUAL	NW & SW
C1-010	1A	1	1 Bedroom Apartment	48.60 m ²	45.00 m ²	Yes	11.70 m ²	0.00 m ²	0.00 m ²	11.70 m ²	26.70 m ²	3.70 m ²	6.10 m ²		SINGLE	NW
C1-011	2X	2	2 Bedroom Apartment	74.00 m ²	73.00 m ²	Yes	11.40 m ²	13.40 m ²	0.00 m ²	24.80 m ²	30.00 m ²	7.00 m ²	10.00 m ²		SINGLE	NW
C1-012	0A	0	Studio Apartment	40.90 m ²	37.00 m ²	Yes	0.00 m ²	0.00 m ²	0.00 m ²	-	31.50 m ²	3.00 m ²	5.80 m ²		SINGLE	NW
C1-013	2I	2	2 Bedroom Apartment	73.50 m ²	73.00 m ²	Yes	11.40 m ²	13.00 m ²	0.00 m ²	24.40 m ²	30.00 m ²	6.00 m ²	9.60 m ²		DUAL	NW & SW
C1-014	1F	1	1 Bedroom Apartment	48.60 m ²	45.00 m ²	Yes	11.40 m ²	0.00 m ²	0.00 m ²	11.40 m ²	27.50 m ²	3.30 m ²	7.90 m ²		DUAL	SW & NW
C1-102	2F	2	2 Bedroom Apartment	73.00 m ²	73.00 m ²	No	12.50 m ²	13.00 m ²	0.00 m ²	25.50 m ²	30.00 m ²	6.00 m ²	9.70 m ²	2.9 sqm additional storage in basement	DUAL	NE & NW
C1-103	2Y	2	2 Bedroom Apartment	82.90 m ²	73.00 m ²	Yes	11.50 m ²	13.20 m ²	0.00 m ²	24.70 m ²	30.00 m ²	6.10 m ²	12.40 m ²		DUAL	NE & SE
C1-104	1C	1	1 Bedroom Apartment	49.30 m ²	45.00 m ²	Yes	11.70 m ²	0.00 m ²	0.00 m ²	11.70 m ²	27.20 m ²	3.70 m ²	6.70 m ²		SINGLE	SE
C1-105	1C	1	1 Bedroom Apartment	49.30 m ²	45.00 m ²	Yes	11.70 m ²	0.00 m ²	0.00 m ²	11.70 m ²	27.20 m ²	3.70 m ²	6.70 m ²		SINGLE	SE
C1-106	1C	1	1 Bedroom Apartment	49.30 m ²	45.00 m ²	Yes	11.70 m ²	0.00 m ²	0.00 m ²	11.70 m ²	27.20 m ²	3.70 m ²	6.70 m ²		SINGLE	SE
C1-107	1K	1	1 Bedroom Apartment	48.60 m ²	45.00 m ²	No	11.70 m ²	0.00 m ²	0.00 m ²	11.70 m ²	26.70 m ²	3.70 m ²	6.10 m ²		SINGLE	SE
C1-108	1A	1	1 Bedroom Apartment	48.60 m ²	45.00 m ²	Yes	11.70 m ²	0.00 m ²	0.00 m ²	11.70 m ²	26.70 m ²	3.70 m ²	6.10 m ²		DUAL	SE & SW
C1-109	1A	1	1 Bedroom Apartment	48.60 m ²	45.00 m ²	Yes	11.70 m ²	0.00 m ²	0.00 m ²	11.70 m ²	26.70 m ²	3.70 m ²	6.10 m ²		DUAL	NW & SW
C1-110	1K	1	1 Bedroom Apartment	48.60 m ²	45.00 m ²	No	11.70 m ²	0.00 m ²	0.00 m ²	11.40 m ²	26.70 m ²	3.70 m ²	6.10 m ²		SINGLE	NW
C1-111	1A	1	1 Bedroom Apartment	48.60 m ²	45.00 m ²	Yes	11.70 m ²	0.00 m ²	0.00 m ²	11.70 m ²	26.70 m ²	3.70 m ²	6.10 m ²		SINGLE	NW
C1-112	1P	1	1 Bedroom Apartment	45.20 m ²	45.00 m ²	Yes	11.40 m ²	0.00 m ²	0.00 m ²	11.40 m ²	23.00 m ²	3.10 m ²	7.30 m ²		SINGLE	NW
C1-113	0A	0	Studio Apartment	40.90 m ²	37.00 m ²	Yes	0.00 m ²	0.00 m ²	0.00 m ²	-	31.50 m ²	3.00 m ²	5.80 m ²		SINGLE	NW
C1-114	2I	2	2 Bedroom Apartment	73.50 m ²	73.00 m ²	Yes	11.40 m ²	13.00 m ²	0.00 m ²	24.40 m ²	30.00 m ²	6.00 m ²	9.60 m ²		DUAL	NW & SW
C1-115	1F	1	1 Bedroom Apartment	48.60 m ²	45.00 m ²	Yes	11.40 m ²	0.00 m ²	0.00 m ²	11.40 m ²	27.50 m ²	3.30 m ²	7.90 m ²		DUAL	SW & NW
C1-201	2J	2	2 Bedroom Apartment	74.00 m ²	73.00 m ²	Yes	11.40 m ²	13.60 m ²	0.00 m ²	25.00 m ²	30.00 m ²	6.00 m ²	19.70 m ²		DUAL	NE & NW
C1-202	2F	2	2 Bedroom Apartment	73.00 m ²	73.00 m ²	No	12.50 m ²	13.00 m ²	0.00 m ²	25.50 m ²	30.00 m ²	6.00 m ²	9.70 m ²	2.9 sqm additional storage in basement	DUAL	NE & NW
C1-203	2Y	2	2 Bedroom Apartment	82.90 m ²	73.00 m ²	Yes	11.50 m ²	13.20 m ²	0.00 m ²	24.70 m ²	30.00 m ²	6.10 m ²	12.40 m ²		DUAL	NE & SE
C1-204	1C	1	1 Bedroom Apartment	49.30 m ²	45.00 m ²	Yes	11.70 m ²	0.00 m ²	0.00 m ²	11.70 m ²	27.20 m ²	3.70 m ²	6.70 m ²		SINGLE	SE
C1-205	1C	1	1 Bedroom Apartment	49.30 m ²	45.00 m ²	Yes	11.70 m ²	0.00 m ²	0.00 m ²	11.70 m ²	27.20 m ²	3.70 m				

PRINCIPAL STATISTICS							BEDROOMS				LIVING / DINING	AMENITY / STORAGE		OTHER FEATURES		
Unit Number	Unit Type	Bedroom Count	Unit Description	Unit Area	Minimum Unit Area	Oversized Unit	Bedroom 1 Area	Bedroom 2 Area	Bedroom 3 Area	Aggregate Bedroom Area	Provided Living/Kitchen Area	Aggregate Storage Area	Private Amenity Area	Comments	View Aspect	Orientation
	1I															
C1-306	1K	1	1 Bedroom Apartment	48.60 m ²	45.00 m ²	No	11.70 m ²	0.00 m ²	0.00 m ²	11.70 m ²	26.70 m ²	3.70 m ²	6.10 m ²		SINGLE	SE
C1-307	1L	1	1 Bedroom Apartment	48.60 m ²	45.00 m ²	Yes	11.50 m ²	0.00 m ²	0.00 m ²	11.50 m ²	26.70 m ²	3.70 m ²	6.10 m ²		DUAL	SE & SW
C1-308	1L	1	1 Bedroom Apartment	48.60 m ²	45.00 m ²	Yes	11.50 m ²	0.00 m ²	0.00 m ²	11.50 m ²	26.70 m ²	3.70 m ²	6.10 m ²		DUAL	NW & SW
C1-309	1K	1	1 Bedroom Apartment	48.60 m ²	45.00 m ²	No	11.70 m ²	0.00 m ²	0.00 m ²	11.70 m ²	26.70 m ²	3.70 m ²	6.10 m ²		SINGLE	NW
C1-310	1C	1	1 Bedroom Apartment	49.30 m ²	45.00 m ²	Yes	11.70 m ²	0.00 m ²	0.00 m ²	11.70 m ²	27.20 m ²	3.70 m ²	6.70 m ²		SINGLE	NW
C1-311	1B	1	1 Bedroom Apartment	45.90 m ²	45.00 m ²	Yes	11.40 m ²	0.00 m ²	0.00 m ²	11.40 m ²	23.60 m ²	3.10 m ²	7.30 m ²		SINGLE	NW
C1-312	0B	0	Studio Apartment	41.20 m ²	37.00 m ²	Yes	0.00 m ²	0.00 m ²	0.00 m ²	-	31.40 m ²	3.00 m ²	5.70 m ²		SINGLE	NW
C1-313	1C	1	1 Bedroom Apartment	49.30 m ²	45.00 m ²	Yes	11.70 m ²	0.00 m ²	0.00 m ²	11.70 m ²	27.20 m ²	3.70 m ²	6.70 m ²		SINGLE	NW
C1-401	2G	2	2 Bedroom Apartment	77.70 m ²	73.00 m ²	Yes	11.40 m ²	13.60 m ²	0.00 m ²	25.00 m ²	30.00 m ²	6.20 m ²	12.30 m ²	2.1 sqm Additional storage in basement	DUAL	NE & NW
C1-402	2Y	2	2 Bedroom Apartment	82.90 m ²	73.00 m ²	Yes	11.50 m ²	13.20 m ²	0.00 m ²	24.70 m ²	30.00 m ²	6.10 m ²	12.40 m ²		DUAL	NE & SE
C1-403	1C	1	1 Bedroom Apartment	49.30 m ²	45.00 m ²	Yes	11.70 m ²	0.00 m ²	0.00 m ²	11.70 m ²	27.20 m ²	3.70 m ²	6.70 m ²		SINGLE	SE
C1-404	1C	1	1 Bedroom Apartment	49.30 m ²	45.00 m ²	Yes	11.70 m ²	0.00 m ²	0.00 m ²	11.70 m ²	27.20 m ²	3.70 m ²	6.70 m ²		SINGLE	SE
C1-405	1C	1	1 Bedroom Apartment	49.30 m ²	45.00 m ²	Yes	11.70 m ²	0.00 m ²	0.00 m ²	11.70 m ²	27.20 m ²	3.70 m ²	6.70 m ²		SINGLE	SE
C1-406	1K	1	1 Bedroom Apartment	48.60 m ²	45.00 m ²	No	11.70 m ²	0.00 m ²	0.00 m ²	11.70 m ²	26.70 m ²	3.70 m ²	6.10 m ²		SINGLE	SE
C1-407	1I	1	1 Bedroom Apartment	50.50 m ²	45.00 m ²	Yes	11.70 m ²	0.00 m ²	0.00 m ²	11.70 m ²	28.90 m ²	3.00 m ²	6.10 m ²		DUAL	SE & SW
C1-408	1I	1	1 Bedroom Apartment	50.50 m ²	45.00 m ²	Yes	11.70 m ²	0.00 m ²	0.00 m ²	11.70 m ²	28.90 m ²	3.00 m ²	6.10 m ²		DUAL	NW & SW
C1-409	1K	1	1 Bedroom Apartment	48.60 m ²	45.00 m ²	No	11.70 m ²	0.00 m ²	0.00 m ²	11.70 m ²	26.70 m ²	3.70 m ²	6.10 m ²		SINGLE	NW
C1-410	1C	1	1 Bedroom Apartment	49.30 m ²	45.00 m ²	Yes	11.70 m ²	0.00 m ²	0.00 m ²	11.70 m ²	27.20 m ²	3.70 m ²	6.70 m ²		SINGLE	NW
C1-411	1B	1	1 Bedroom Apartment	45.90 m ²	45.00 m ²	Yes	11.40 m ²	0.00 m ²	0.00 m ²	11.40 m ²	23.60 m ²	3.10 m ²	7.30 m ²		SINGLE	NW
C1-412	0B	0	Studio Apartment	41.20 m ²	37.00 m ²	Yes	0.00 m ²	0.00 m ²	0.00 m ²	-	31.40 m ²	3.00 m ²	5.70 m ²		SINGLE	NW
C1-413	1C	1	1 Bedroom Apartment	49.30 m ²	45.00 m ²	Yes	11.70 m ²	0.00 m ²	0.00 m ²	11.70 m ²	27.20 m ²	3.70 m ²	6.70 m ²		SINGLE	NW
C1-501	2H	2	2 Bedroom Apartment	76.30 m ²	73.00 m ²	Yes	11.40 m ²	14.50 m ²	0.00 m ²	25.90 m ²	30.00 m ²	6.00 m ²	12.30 m ²	2.8sqm Additional storage in basement	DUAL	NE & NW
C1-502	2V	2	2 Bedroom Apartment	82.00 m ²	73.00 m ²	Yes	11.40 m ²	13.10 m ²	0.00 m ²	24.50 m ²	30.00 m ²	6.20 m ²	16.20 m ²		DUAL	NE & SE
C1-503	1A	1	1 Bedroom Apartment	48.60 m ²	45.00 m ²	Yes	11.70 m ²	0.00 m ²	0.00 m ²	11.70 m ²	26.70 m ²	3.70 m ²	10.80 m ²		SINGLE	SE
C1-504	1A	1	1 Bedroom Apartment	48.60 m ²	45.00 m ²	Yes	11.70 m ²	0.00 m ²	0.00 m ²	11.70 m ²	26.70 m ²	3.70 m ²	10.80 m ²		SINGLE	SE
C1-505	1A	1	1 Bedroom Apartment	48.60 m ²	45.00 m ²	Yes	11.70 m ²	0.00 m ²	0.00 m ²	11.70 m ²	26.70 m ²	3.70 m ²	6.10 m ²		SINGLE	SE
C1-506	1K	1	1 Bedroom Apartment	48.60 m ²	45.00 m ²	No	11.70 m ²	0.00 m ²	0.00 m ²	11.70 m ²	26.70 m ²	3.70 m ²	6.10 m ²		SINGLE	SE
C1-507	1I	1	1 Bedroom Apartment	50.50 m ²	45.00 m ²	Yes	11.70 m ²	0.00 m ²	0.00 m ²	11.70 m ²	28.90 m ²	3.00 m ²	6.10 m ²		DUAL	SE & SW
C1-508	1I	1	1 Bedroom Apartment	50.50 m ²	45.00 m ²	Yes	11.70 m ²	0.00 m ²	0.00 m ²	11.70 m ²	28.90 m ²	3.00 m ²	6.10 m ²		DUAL	NW & SW
C1-509	1K	1	1 Bedroom Apartment	48.60 m ²	45.00 m ²	No	11.70 m ²	0.00 m ²	0.00 m ²	11.70 m ²	26.70 m ²	3.70 m ²	6.10 m ²		SINGLE	NW
C1-510	1A	1	1 Bedroom Apartment	48.60 m ²	45.00 m ²	Yes	11.70 m ²	0.00 m ²	0.00 m ²	11.70 m ²	26.70 m ²	3.70 m ²	10.80 m ²		SINGLE	NW
C1-511	1P	1	1 Bedroom Apartment	45.20 m ²	45.00 m ²	Yes	11.40 m ²	0.00 m ²	0.00 m ²	11.40 m ²	23.00 m ²	3.10 m ²	7.30 m ²		SINGLE	NW
C1-512	0A	0	Studio Apartment	40.90 m ²	37.00 m ²	Yes	0.00 m ²	0.00 m ²	0.00 m ²	-	31.50 m ²	3.00 m ²	9.10 m ²		SINGLE	NW
C1-513	1A	1	1 Bedroom Apartment	48.60 m ²	45.00 m ²	Yes	11.70 m ²	0.00 m ²	0.00 m ²	11.70 m ²	26.70 m ²	3.70 m ²	10.80 m ²		SINGLE	NW
C1-LG01	1A	1	1 Bedroom Apartment	48.60 m ²	45.00 m ²	Yes	11.70 m ²	0.00 m ²	0.00 m ²	11.70 m ²	26.70 m ²	3.70 m ²	6.10 m ²		DUAL	NE & SE
C1-LG02	1A	1	1 Bedroom Apartment	48.60 m ²	45.00 m ²	Yes	11.70 m ²	0.00 m ²	0.00 m ²	11.70 m ²	26.70 m ²	3.70 m ²	6.10 m ²		SINGLE	SE
C1-LG03	1A	1	1 Bedroom Apartment	48.60 m ²	45.00 m ²	Yes	11.70 m ²	0.00 m ²	0.00 m ²	11.70 m ²	26.70 m ²	3.70 m ²	6.10 m ²		SINGLE	SE
C1-LG04	1A	1	1 Bedroom Apartment	48.60 m ²	45.00 m ²	Yes	11.70 m ²	0.00 m ²	0.00 m ²	11.70 m ²	26.70 m ²	3.70 m ²	6.10 m ²		SINGLE	SE
C1-LG05	1L	1	1 Bedroom Apartment	48.60 m ²	45.00 m ²	Yes	11.50 m ²	0.00 m ²	0.00 m ²	11.50 m ²	26.70 m ²	3.70 m ²	6.10 m ²		DUAL	SE & SW
D1-001	1G	1	1 Bedroom Apartment	50.00 m ²	45.00 m ²	Yes	12.00 m ²	0.00 m ²	0.00 m ²	12.00 m ²	27.00 m ²	3.70 m ²	5.30 m ²		DUAL	E & N
D1-002	2A	2	2 Bedroom Apartment	74.80 m ²	73.00 m ²	Yes	11.50 m ²	13.00 m ²	0.00 m ²	24.50 m ²	31.30 m ²	6.50 m ²	7.10 m ²		DUAL	NE & SE
D1-003	2A	2	2 Bedroom Apartment	74.80 m ²	73.00 m ²	Yes	11.50 m ²	13.00 m ²	0.00 m ²	24.50 m ²	31.30 m ²	6.50 m ²	7.10 m ²		DUAL	NE & SE
D1-004	2A	2	2 Bedroom Apartment	74.80 m ²	73.00 m ²	Yes	11.50 m ²	13.00 m ²	0.00 m ²	24.50 m ²	31.30 m ²	6.50 m ²	7.10 m ²		DUAL	NE & SE
D1-005	2A	2	2 Bedroom Apartment	74.80 m ²	73.00 m ²	Yes	11.50 m ²	13.00 m ²	0.00 m ²	24.50 m ²	31.30 m ²	6.50 m ²	7.10 m ²		DUAL	NE & SE
D1-006	2B	2	2 Bedroom Apartment	75.50 m ²	73.00 m ²	Yes	11.40 m ²	14.60 m ²	0.00 m ²	26.00 m ²	30.40 m ²	6.10 m ²	7.10 m ²		DUAL	N & E
D1-007	2B	2	2 Bedroom Apartment	75.50 m ²	73.00 m ²	Yes	11.40 m ²	14.60 m ²	0.00 m ²	26.00 m ²	30.40 m ²	6.10 m ²	7.10 m ²		DUAL	NW & SW
D1-008	2B	2	2 Bedroom Apartment	75.50 m ²	73.00 m ²	Yes	11.40 m ²	14.60 m ²	0.00 m ²	26.00 m ²	30.40 m ²	6.10 m ²	7.10 m ²		DUAL	W & S
D1-101	1G	1	1 Bedroom Apartment	50.00 m ²	45.00 m ²	Yes	12.00 m ²	0.00 m ²	0.00 m ²	12.00 m ²	27.00 m ²	3.70 m ²	5.30 m ²		DUAL	E & N
D1-102	2A	2	2 Bedroom Apartment	74.80 m ²	73.00 m ²	Yes	11.50 m ²	13.00 m ²	0.00 m ²	24.50 m ²	31.30 m ²	6.50 m ²	7.10 m ²		DUAL	NE & SE
D1-103	2A	2	2 Bedroom Apartment	74.80 m ²	73.00 m ²	Yes	11.50 m ²	13.00 m ²	0.00 m ²	24.50 m ²	31.30 m ²	6.50 m ²	7.10 m ²		DUAL	NE & SE
D1-104	2A	2	2 Bedroom Apartment	74.80 m ²	73.00 m ²	Yes	11.50 m ²	13.00 m ²	0.00 m ²	24.50 m ²	31.30 m ²	6.50 m ²	7.10 m ²		DUAL	NE & SE
D1-105	2A	2	2 Bedroom Apartment	74.80 m ²	73.00 m ²	Yes	11.50 m ²	13.00 m ²	0.00 m ²	24.50 m ²	31.30 m ²	6.50 m ²	7.10 m ²		DUAL	NE & SE
D1-106	2M	2	2 Bedroom Apartment	78.00 m ²	73.00 m ²	Yes	13.30 m ²	14.30 m ²	0.00 m ²	27.60 m ²	30.40 m ²					

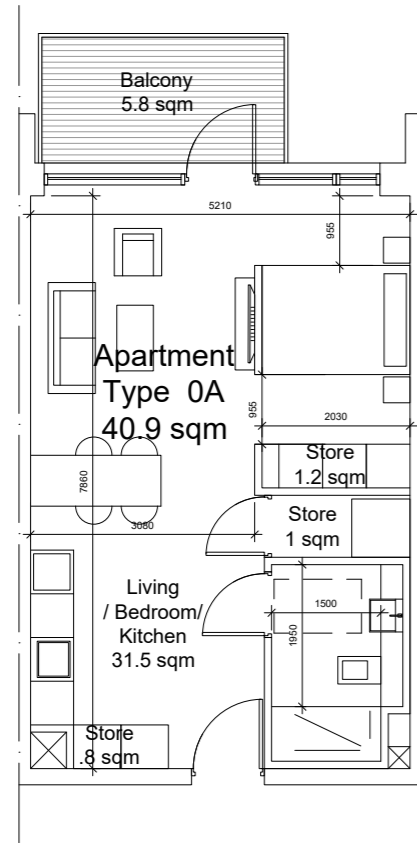
PRINCIPAL STATISTICS							BEDROOMS				LIVING / DINING	AMENITY / STORAGE		OTHER FEATURES		
Unit Number	Unit Type	Bedroom Count	Unit Description	Unit Area	Minimum Unit Area	Oversized Unit	Bedroom 1 Area	Bedroom 2 Area	Bedroom 3 Area	Aggregate Bedroom Area	Provided Living/Kitchen Area	Aggregate Storage Area	Private Amenity Area	Comments	View Aspect	Orientation
1I																
F1-302	2K	2	2 Bedroom Apartment	80.40 m ²	73.00 m ²	Yes	11.70 m ²	13.00 m ²	0.00 m ²	24.70 m ²	34.40 m ²	7.50 m ²	8.60 m ²		DUAL	N & E
F1-303	3B	3	3 Bedroom Apartment	94.30 m ²	90.00 m ²	Yes	12.40 m ²	13.10 m ²	8.40 m ²	33.90 m ²	36.00 m ²	9.00 m ²	13.20 m ²		DUAL	N & E
F1-304	3B	3	3 Bedroom Apartment	94.30 m ²	90.00 m ²	Yes	12.40 m ²	13.10 m ²	8.40 m ²	33.90 m ²	36.00 m ²	9.00 m ²	13.20 m ²		DUAL	NE & SE
F1-305	1D	1	1 Bedroom Apartment	49.70 m ²	45.00 m ²	Yes	11.70 m ²	0.00 m ²	0.00 m ²	11.70 m ²	27.20 m ²	3.70 m ²	6.70 m ²		DUAL	E & S
F1-306	1D	1	1 Bedroom Apartment	49.70 m ²	45.00 m ²	Yes	11.70 m ²	0.00 m ²	0.00 m ²	11.70 m ²	27.50 m ²	3.70 m ²	6.70 m ²		DUAL	N & E
F1-307	2K	2	2 Bedroom Apartment	80.40 m ²	73.00 m ²	Yes	11.70 m ²	13.00 m ²	0.00 m ²	24.70 m ²	34.40 m ²	7.50 m ²	8.60 m ²		DUAL	N & E
F1-308	0C	0	Studio Apartment	40.00 m ²	37.00 m ²	No	0.00 m ²	0.00 m ²	0.00 m ²	-	31.20 m ²	3.00 m ²	4.10 m ²		DUAL	NE & SE
F1-309	0C	0	Studio Apartment	40.00 m ²	37.00 m ²	No	0.00 m ²	0.00 m ²	0.00 m ²	-	31.20 m ²	3.00 m ²	4.10 m ²		DUAL	W & S
F1-310	2K	2	2 Bedroom Apartment	80.40 m ²	73.00 m ²	Yes	11.70 m ²	13.00 m ²	0.00 m ²	24.70 m ²	34.40 m ²	7.50 m ²	8.60 m ²		DUAL	NW & SW
F1-311	1D	1	1 Bedroom Apartment	49.70 m ²	45.00 m ²	Yes	11.70 m ²	0.00 m ²	0.00 m ²	11.70 m ²	27.20 m ²	3.70 m ²	6.70 m ²		DUAL	NW & SW
F1-312	1D	1	1 Bedroom Apartment	49.70 m ²	45.00 m ²	Yes	11.70 m ²	0.00 m ²	0.00 m ²	11.70 m ²	27.20 m ²	3.70 m ²	6.70 m ²		DUAL	NW & SW
F1-313	3C	3	3 Bedroom Apartment	97.00 m ²	90.00 m ²	Yes	11.40 m ²	13.00 m ²	7.80 m ²	32.20 m ²	33.00 m ²	9.00 m ²	13.90 m ²		DUAL	S & W
F1-314	1D	1	1 Bedroom Apartment	49.70 m ²	45.00 m ²	Yes	11.70 m ²	0.00 m ²	0.00 m ²	11.70 m ²	27.20 m ²	3.70 m ²	6.70 m ²		DUAL	S & E
F1-315	1D	1	1 Bedroom Apartment	49.70 m ²	45.00 m ²	Yes	11.70 m ²	0.00 m ²	0.00 m ²	11.70 m ²	27.20 m ²	3.70 m ²	6.70 m ²		DUAL	S & E
H1-001	3E	3	3 Bedroom House	120.00 m ²	92.00 m ²	Yes	13.00 m ²	11.40 m ²	7.30 m ²	31.70 m ²	42.10 m ²	9.80 m ²	98.00 m ²		DUAL	NW & SE
H1-002	3E	3	3 Bedroom House	120.00 m ²	92.00 m ²	Yes	13.00 m ²	11.40 m ²	7.30 m ²	31.70 m ²	42.10 m ²	9.80 m ²	100.00 m ²		DUAL	NW & SE
H1-003	3E	3	3 Bedroom House	120.00 m ²	92.00 m ²	Yes	13.00 m ²	11.40 m ²	7.30 m ²	31.70 m ²	42.10 m ²	9.80 m ²	99.00 m ²		DUAL	NW & SE
H1-004	3E	3	3 Bedroom House	120.00 m ²	92.00 m ²	Yes	13.00 m ²	11.40 m ²	7.30 m ²	31.70 m ²	42.10 m ²	9.80 m ²	98.00 m ²		DUAL	NW & SE
H1-005	3E	3	3 Bedroom House	120.00 m ²	92.00 m ²	Yes	13.00 m ²	11.40 m ²	7.30 m ²	31.70 m ²	42.10 m ²	9.80 m ²	95.00 m ²		DUAL	NW & SE
H1-006	3E	3	3 Bedroom House	120.00 m ²	92.00 m ²	Yes	13.00 m ²	11.40 m ²	7.30 m ²	31.70 m ²	42.10 m ²	9.80 m ²	106.00 m ²		DUAL	NW & SE
H1-007	3E	3	3 Bedroom House	120.00 m ²	92.00 m ²	Yes	13.00 m ²	11.40 m ²	7.30 m ²	31.70 m ²	42.10 m ²	9.80 m ²	113.00 m ²		DUAL	NW & SE
H1-008	3E	3	3 Bedroom House	120.00 m ²	92.00 m ²	Yes	13.00 m ²	11.40 m ²	7.30 m ²	31.70 m ²	42.10 m ²	9.80 m ²	149.00 m ²		DUAL	NW & SE
H1-009	3E	3	3 Bedroom House	120.00 m ²	92.00 m ²	Yes	13.00 m ²	11.40 m ²	7.30 m ²	31.70 m ²	42.10 m ²	9.80 m ²	182.00 m ²		DUAL	NW & SE
H1-010	3E	3	3 Bedroom House	120.00 m ²	92.00 m ²	Yes	13.00 m ²	11.40 m ²	7.30 m ²	31.70 m ²	42.10 m ²	9.80 m ²	228.00 m ²		DUAL	NW & SE
H1-011	1N	1	1 Bedroom House	54.80 m ²	44.00 m ²	Yes	11.40 m ²	0.00 m ²	0.00 m ²	11.40 m ²	32.00 m ²	3.50 m ²	51.00 m ²		DUAL	NE & SE
H1-012	1N	1	1 Bedroom House	54.80 m ²	44.00 m ²	Yes	11.40 m ²	0.00 m ²	0.00 m ²	11.40 m ²	32.00 m ²	3.50 m ²	50.00 m ²		DUAL	NE & NW
H1-013	1N	1	1 Bedroom House	54.80 m ²	44.00 m ²	Yes	11.40 m ²	0.00 m ²	0.00 m ²	11.40 m ²	32.00 m ²	3.50 m ²	57.00 m ²		DUAL	NE & SE
H1-014	1N	1	1 Bedroom House	54.80 m ²	44.00 m ²	Yes	11.40 m ²	0.00 m ²	0.00 m ²	11.40 m ²	32.00 m ²	3.50 m ²	56.00 m ²		DUAL	NE & NW
H1-015	1N	1	1 Bedroom House	54.80 m ²	44.00 m ²	Yes	11.40 m ²	0.00 m ²	0.00 m ²	11.40 m ²	32.00 m ²	3.50 m ²	50.00 m ²		DUAL	NE & SE
H1-016	1N	1	1 Bedroom House	54.80 m ²	44.00 m ²	Yes	11.40 m ²	0.00 m ²	0.00 m ²	11.40 m ²	32.00 m ²	3.50 m ²	48.00 m ²		DUAL	NE & NW
Total	468	619		28044.20 m ²	25784.00 m ²		5029.10 m ²	2164.30 m ²	215.80 m ²	7385.80 m ²	13663.20 m ²	2186.70 m ²	5181.50 m ²			



APPENDIX B - UNIT TYPES

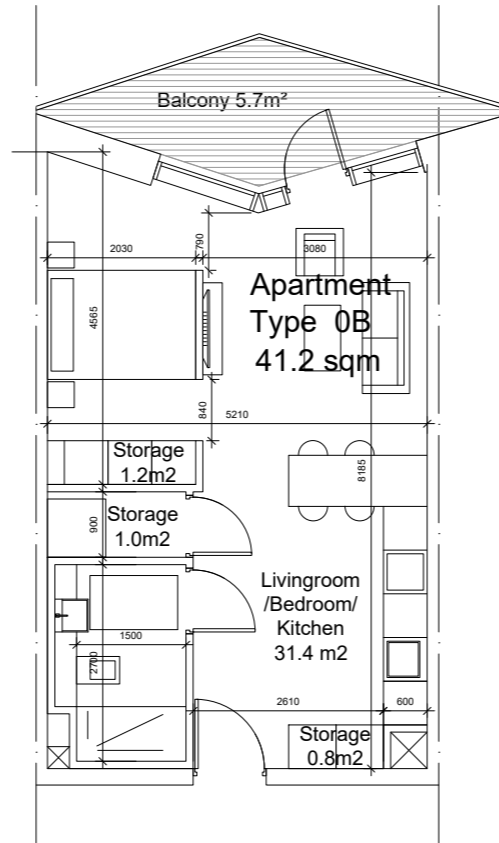






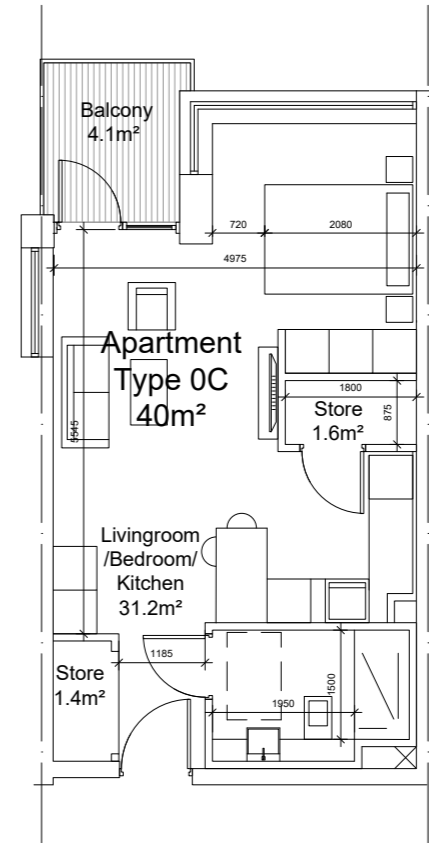
UNIT TYPE - 0A	
NAME	AREA
COMBINED BEDROOM / LIVING AREA	31.5 SQM
AGGREGATE STORAGE	3 SQM
PRIVATE AMENITY SPACE	5.8 SQM
TOTAL APARTMENT AREA	40.9 SQM

01 Studio Apartment - Type 0A (12 Units)
SCALE 1:50



UNIT TYPE - 0B	
NAME	AREA
COMBINED BEDROOM / LIVING AREA	31.4 SQM
AGGREGATE STORAGE	3 SQM
PRIVATE AMENITY SPACE	5.7 SQM
TOTAL APARTMENT AREA	41.2 SQM

02 Studio Apartment - Type 0B (24 Units)
SCALE 1:50



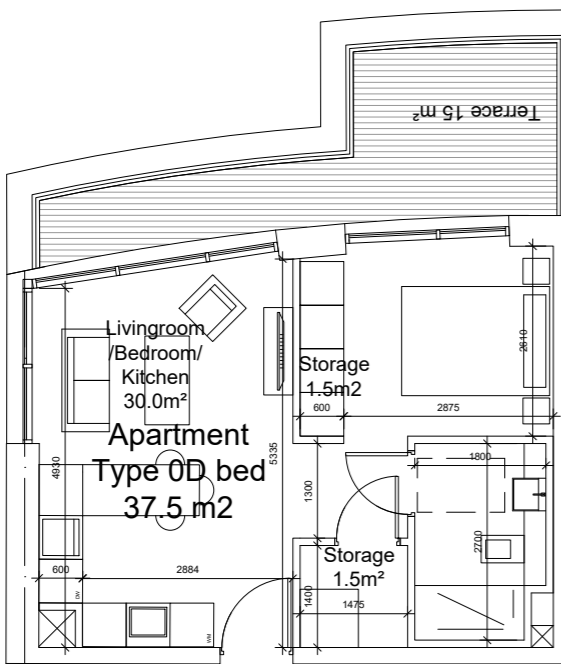
UNIT TYPE - 0C	
NAME	AREA
COMBINED BEDROOM / LIVING AREA	31.2 SQM
AGGREGATE STORAGE	3 SQM
PRIVATE AMENITY SPACE	4.1 SQM
TOTAL APARTMENT AREA	40.0 SQM

03 Studio Apartment - Type 0C (4 Units)
SCALE 1:50



UNIT TYPE - 0D	
NAME	AREA
COMBINED BEDROOM / LIVING AREA	30.0 SQM
AGGREGATE STORAGE	3 SQM
PRIVATE AMENITY SPACE	15 SQM
TOTAL APARTMENT AREA	37.5 SQM

THIRD FLOOR

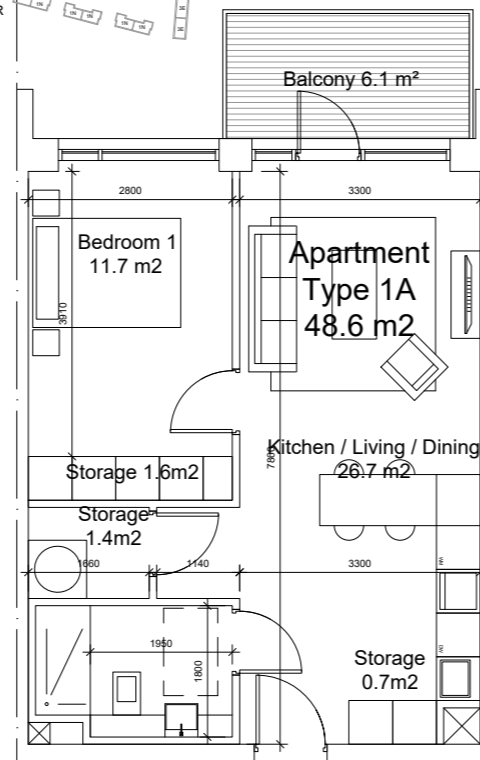


04 Studio Apartment - Type 0D (1 Unit)
SCALE 1:50



UNIT TYPE - 1A	
NAME	AREA
BEDROOM	11.7 SQM
COMBINED KITCHEN / LIVING AREA	26.7 SQM
AGGREGATE STORAGE	3.7 SQM
PRIVATE AMENITY SPACE	6.1 SQM
TOTAL APARTMENT AREA	48.6 SQM

GROUND FLOOR



05 1 Bed Apartment - Type 1A (41 Units)
SCALE 1:50

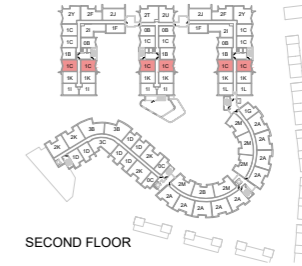


UNIT TYPE - 1B	
NAME	AREA
BEDROOM	11.4 SQM
COMBINED KITCHEN / LIVING AREA	23.6 SQM
AGGREGATE STORAGE	3.1 SQM
PRIVATE AMENITY SPACE	7.3 SQM
TOTAL APARTMENT AREA	45.9 SQM

THIRD FLOOR

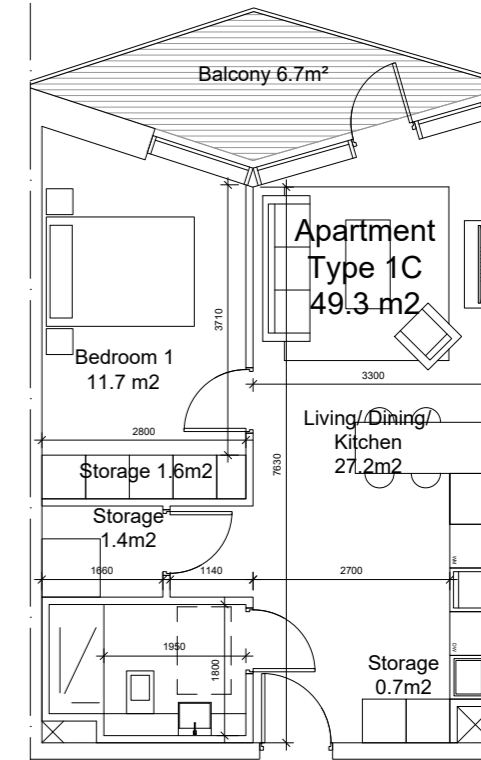


06 Studio Apartment - Type 1B (18 Units)
SCALE 1:50



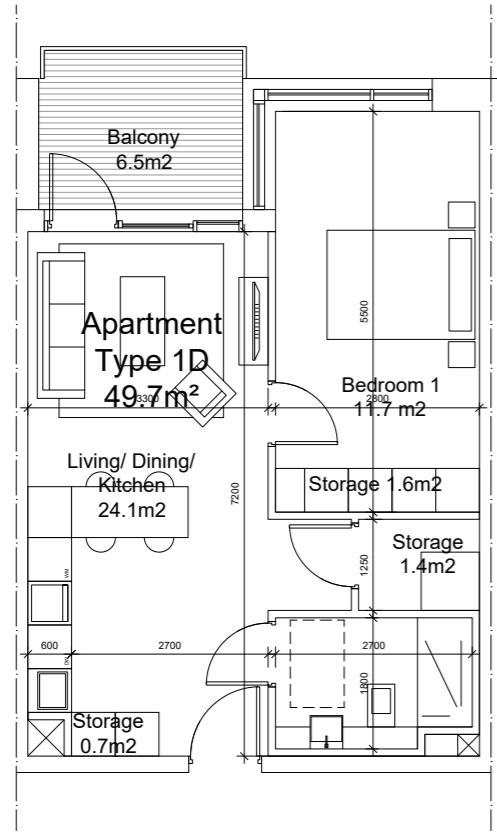
UNIT TYPE - 1C	
NAME	AREA
BEDROOM	11.7 SQM
COMBINED KITCHEN / LIVING AREA	27.2 SQM
AGGREGATE STORAGE	3.7 SQM
PRIVATE AMENITY SPACE	6.7 SQM
TOTAL APARTMENT AREA	49.3 SQM

SECOND FLOOR



07 1 Bed Apartment - Type 1C (77 Units)
SCALE 1:50

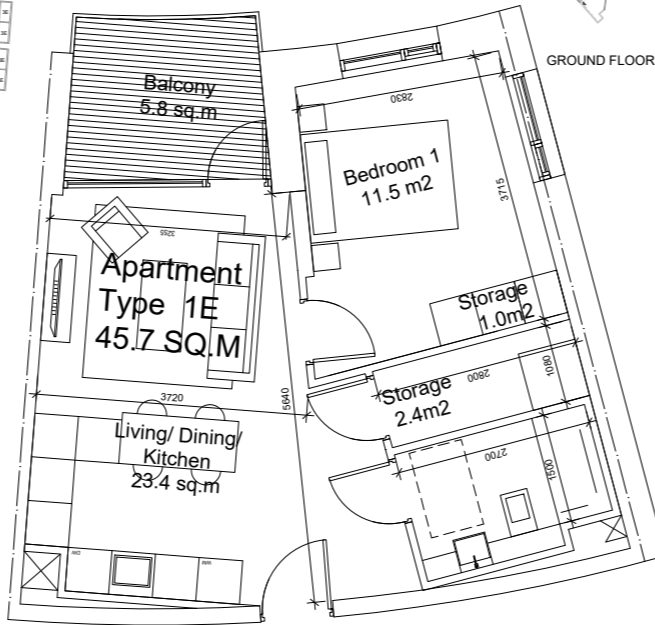
* Please Refer to Drawing PL1920 For Further Detail



01 1 Bed Apartment - Type 1D (24 Units)
SCALE 1:50



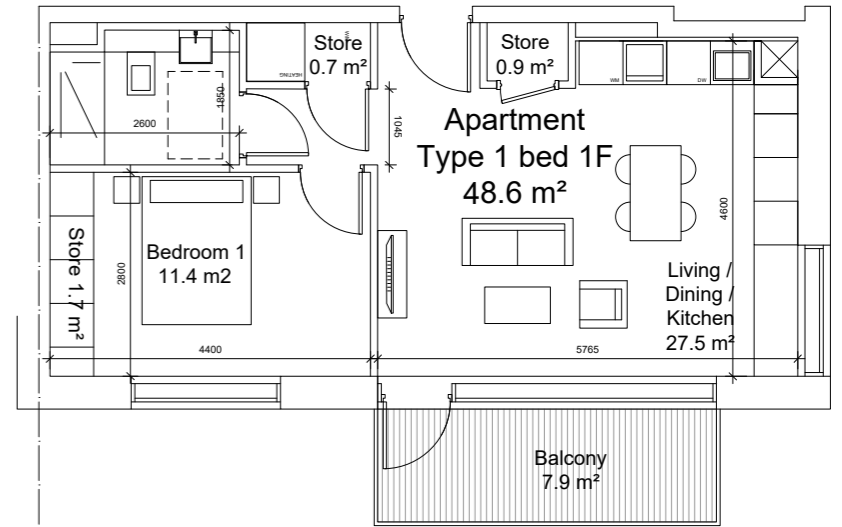
UNIT TYPE - 1D	
NAME	AREA
BEDROOM	11.7 SQM
COMBINED KITCHEN / LIVING AREA	24.1 SQM
AGGREGATE STORAGE	3.7 SQM
PRIVATE AMENITY SPACE	6.5 SQM
TOTAL APARTMENT AREA	49.7 SQM



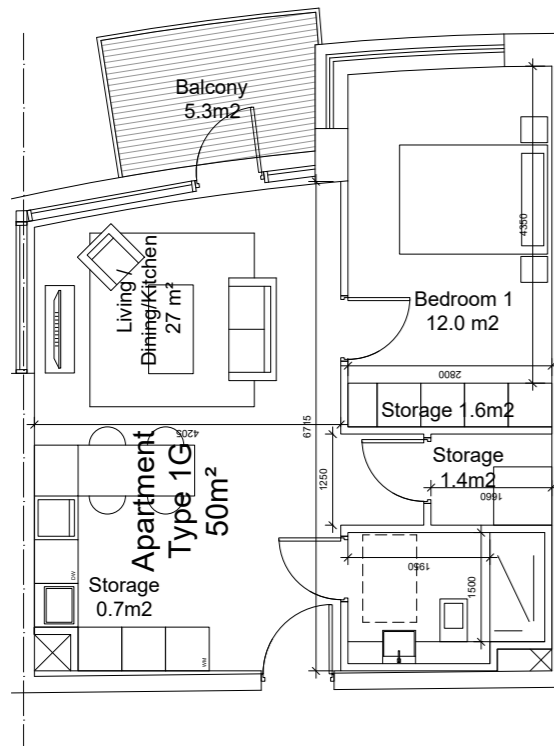
02 1 Bed Apartment - Type 1E (2 Units)
SCALE 1:50



UNIT TYPE - 1E	
NAME	AREA
BEDROOM	11.5 SQM
COMBINED KITCHEN / LIVING AREA	23.4 SQM
AGGREGATE STORAGE	3.4 SQM
PRIVATE AMENITY SPACE	5.8 SQM
TOTAL APARTMENT AREA	45.7 SQM

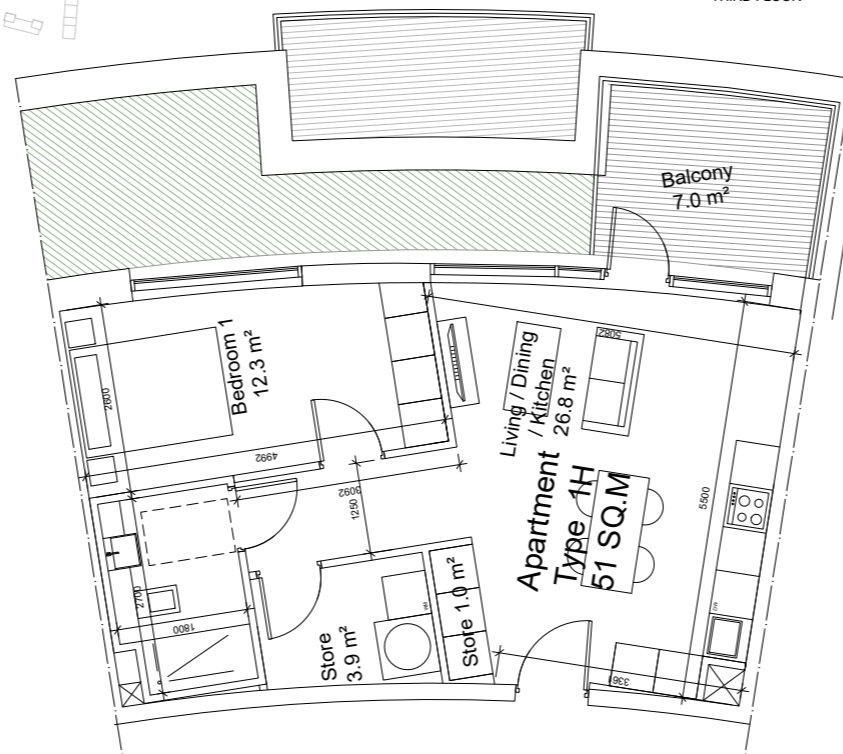


03 1 Bed Apartment - Type 1F (6 Units)
SCALE 1:50



04 1 Bed Apartment - Type 1G (4 Units)
SCALE 1:50

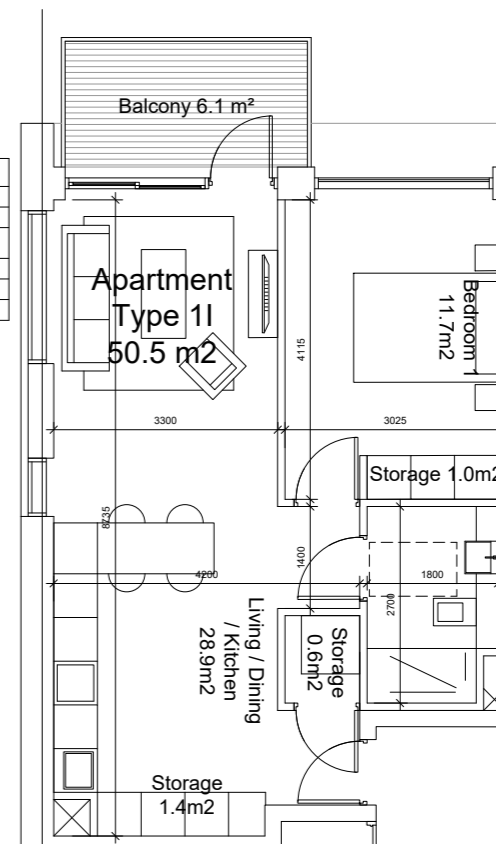
UNIT TYPE - 1G	
NAME	AREA
BEDROOM	12.0 SQM
COMBINED KITCHEN / LIVING AREA	27.0 SQM
AGGREGATE STORAGE	3.7 SQM
PRIVATE AMENITY SPACE	5.3 SQM
TOTAL APARTMENT AREA	50.0 SQM



05 1 Bed Apartment - Type 1H (3 Units)
SCALE 1:50



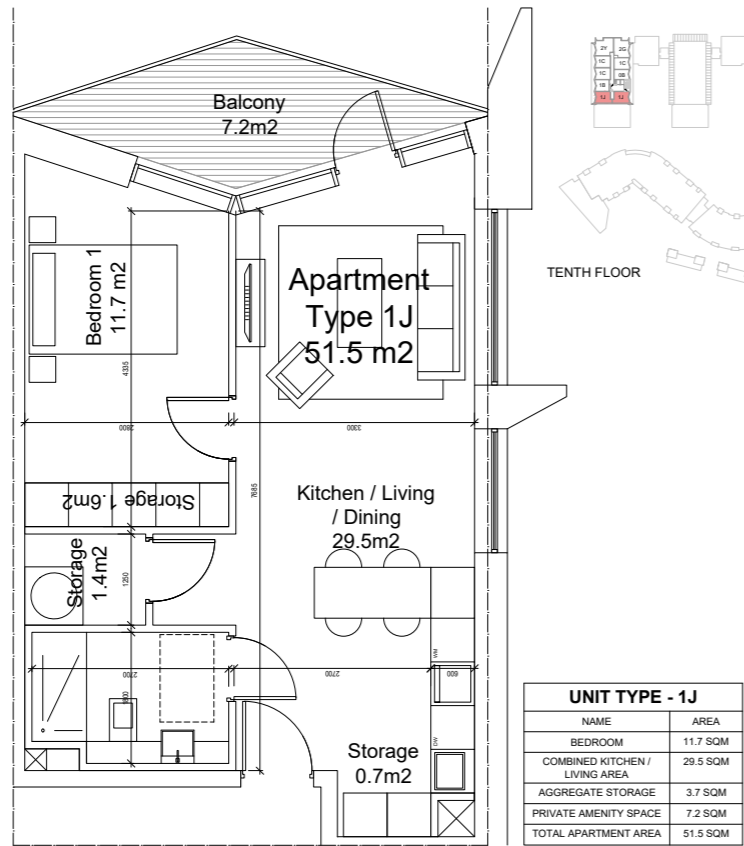
UNIT TYPE - 1H	
NAME	AREA
BEDROOM	12.3 SQM
COMBINED KITCHEN / LIVING AREA	26.8 SQM
AGGREGATE STORAGE	4.9 SQM
PRIVATE AMENITY SPACE	7.0 SQM
TOTAL APARTMENT AREA	51.0 SQM



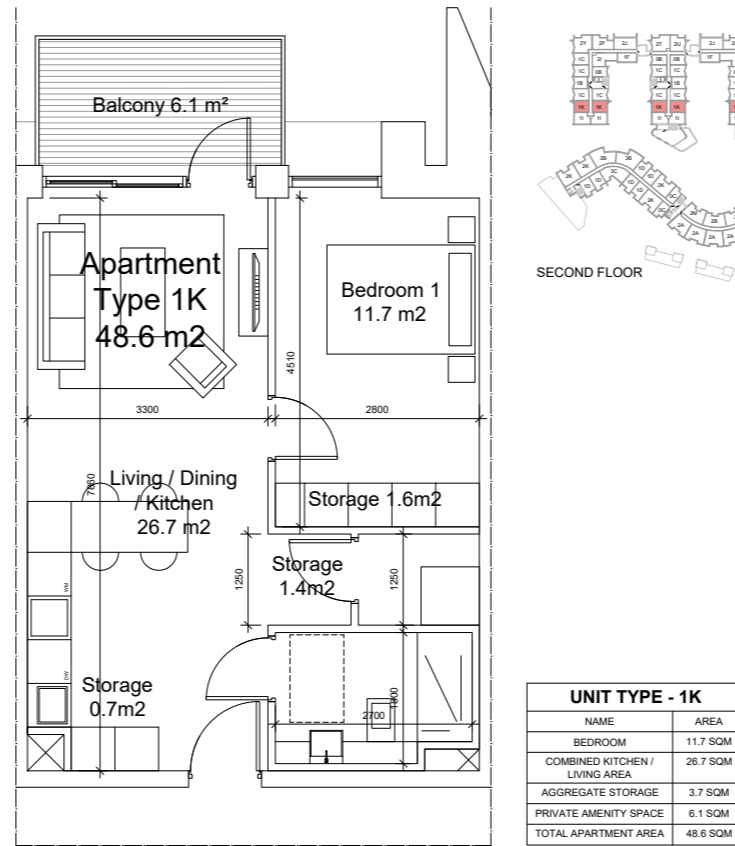
06 1 Bed Apartment - Type 1I (28 Units)
SCALE 1:50



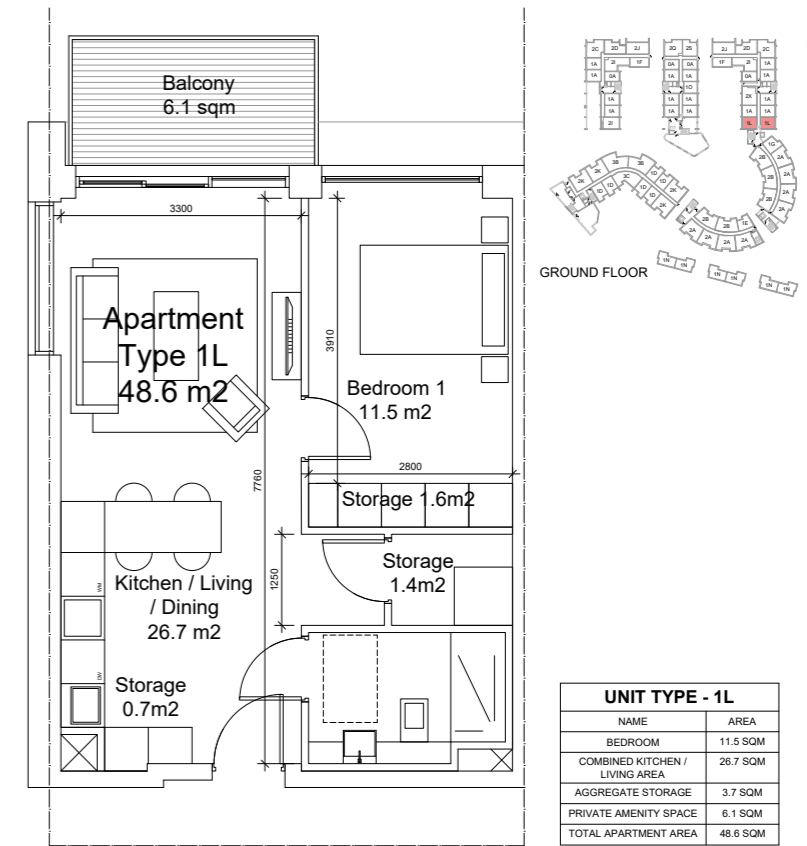
UNIT TYPE - 1I	
NAME	AREA
BEDROOM	11.7 SQM
COMBINED KITCHEN / LIVING AREA	28.9 SQM
AGGREGATE STORAGE	3.0 SQM
PRIVATE AMENITY SPACE	6.1 SQM
TOTAL APARTMENT AREA	50.5 SQM



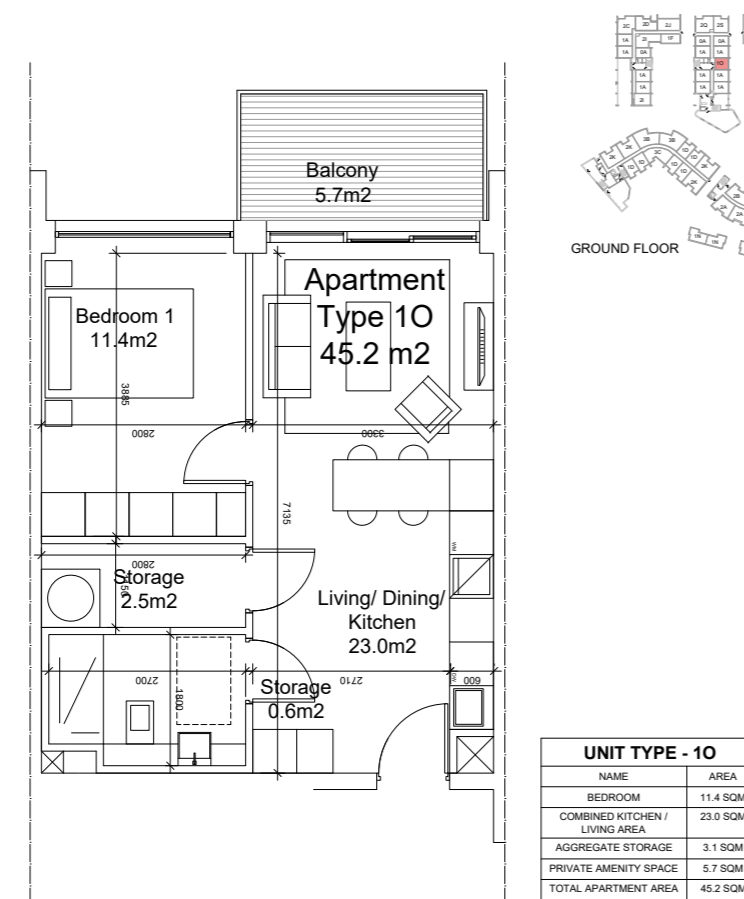
01 1 Bed Apartment - Type 1J (2 Units)
PL1922 SCALE 1:50



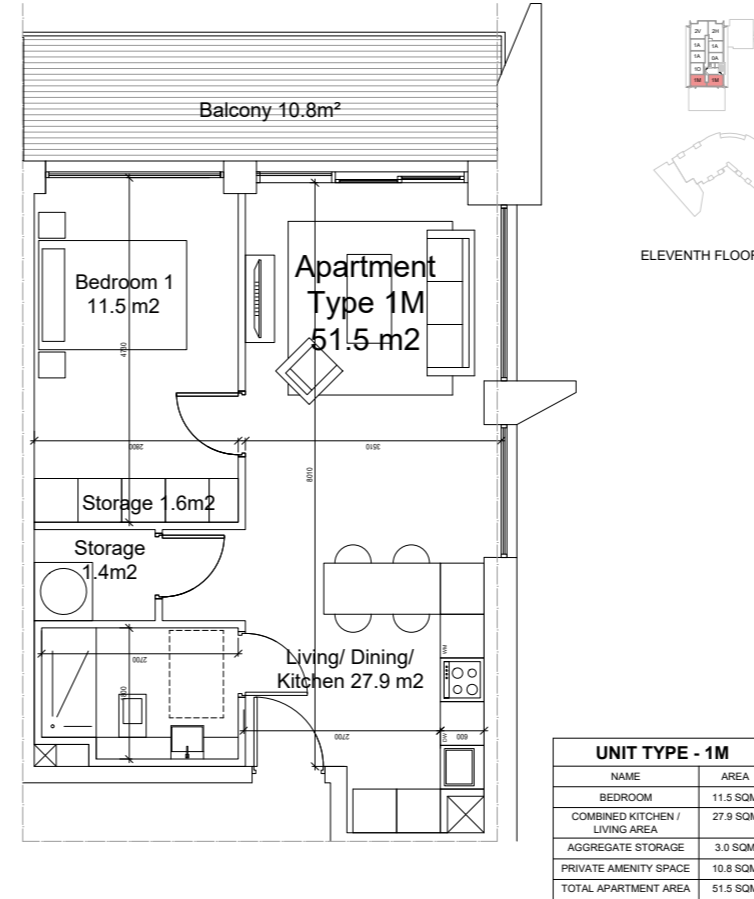
02 1 Bed Apartment - Type 1K (36 Units)
PL1922 SCALE 1:50



03 1 Bed Apartment - Type 1L (7 Units)
PL1922 SCALE 1:50

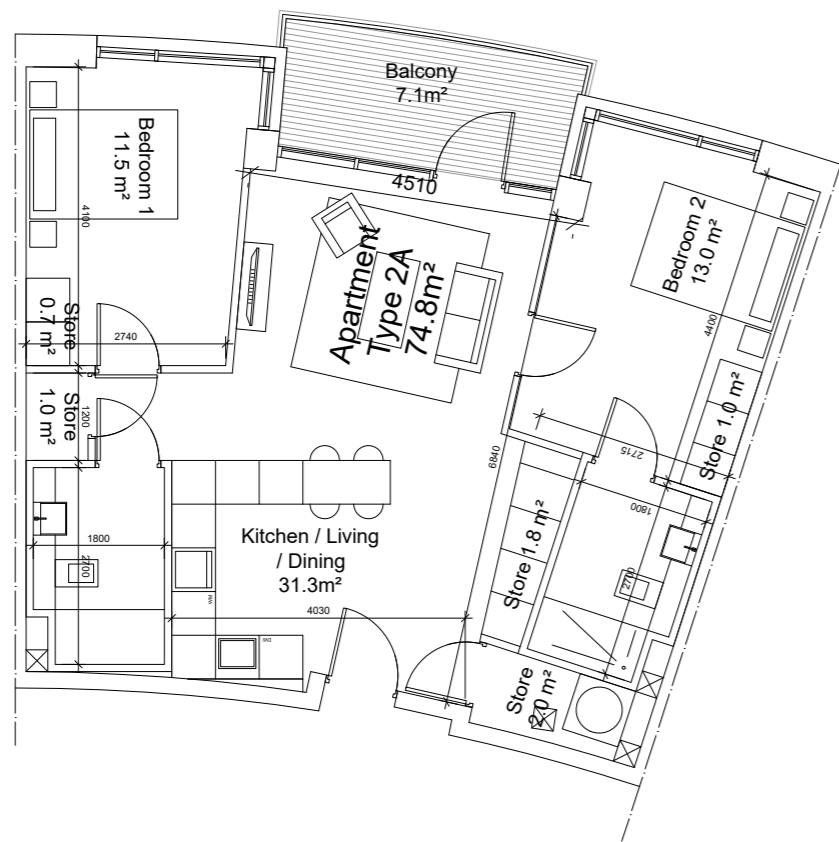


04 1 Bed Apartment - Type 1O (6 Units)
PL1922 SCALE 1:50



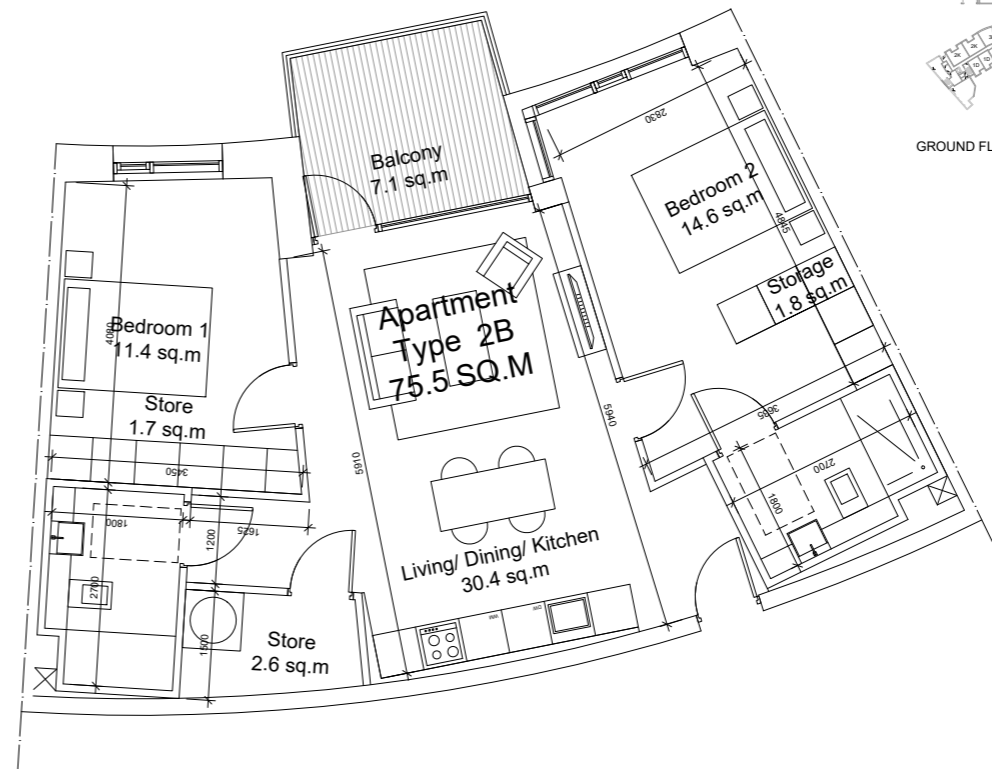
05 1 Bed Apartment - Type 1M (2 Units)
PL1923 SCALE 1:50

* Please Refer to Drawing PL1922 For Further Detail



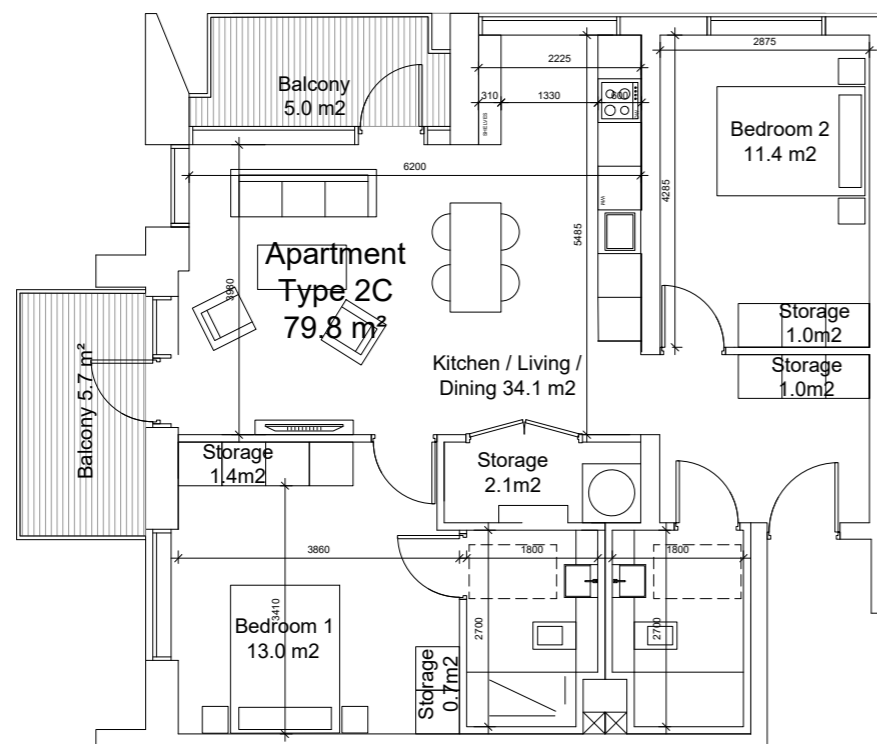
UNIT TYPE - 2A	
NAME	AREA
BEDROOM 1	11.5 SQM
BEDROOM 2	13.0 SQM
AGGREGATE BEDROOM AREA	24.5 SQM
COMBINED KITCHEN / LIVING AREA	31.3 SQM
AGGREGATE STORAGE	6.5 SQM
PRIVATE AMENITY SPACE	7.1 SQM
TOTAL APARTMENT AREA	74.8 SQM

01 2 Bed Apartment - Type 2A (29 Units)
SCALE 1:50



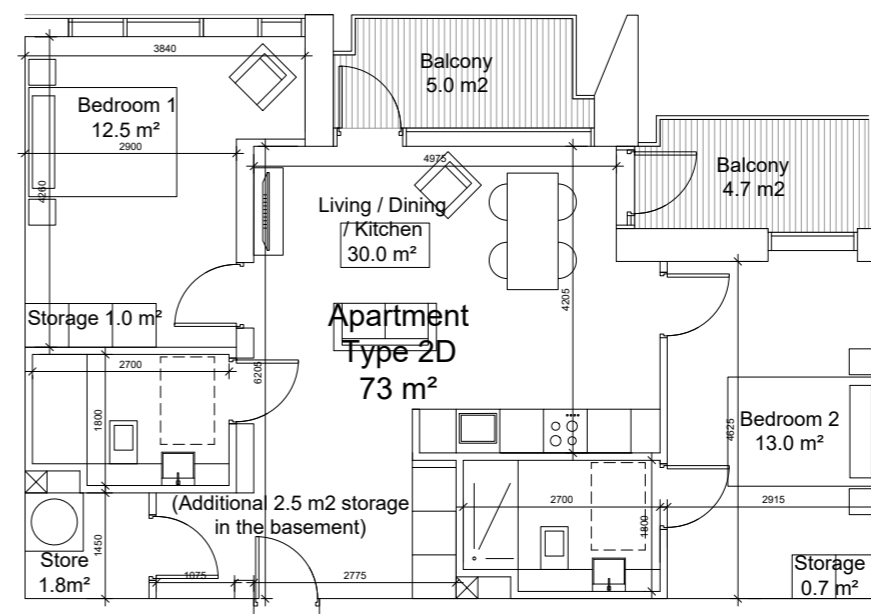
UNIT TYPE - 2B	
NAME	AREA
BEDROOM 1	11.4 SQM
BEDROOM 2	14.6 SQM
AGGREGATE BEDROOM AREA	26.0 SQM
COMBINED KITCHEN / LIVING AREA	30.4 SQM
AGGREGATE STORAGE	6.1 SQM
PRIVATE AMENITY SPACE	7.1 SQM
TOTAL APARTMENT AREA	75.5 SQM

02 2 Bed Apartment - Type 2B (10 Units)
SCALE 1:50



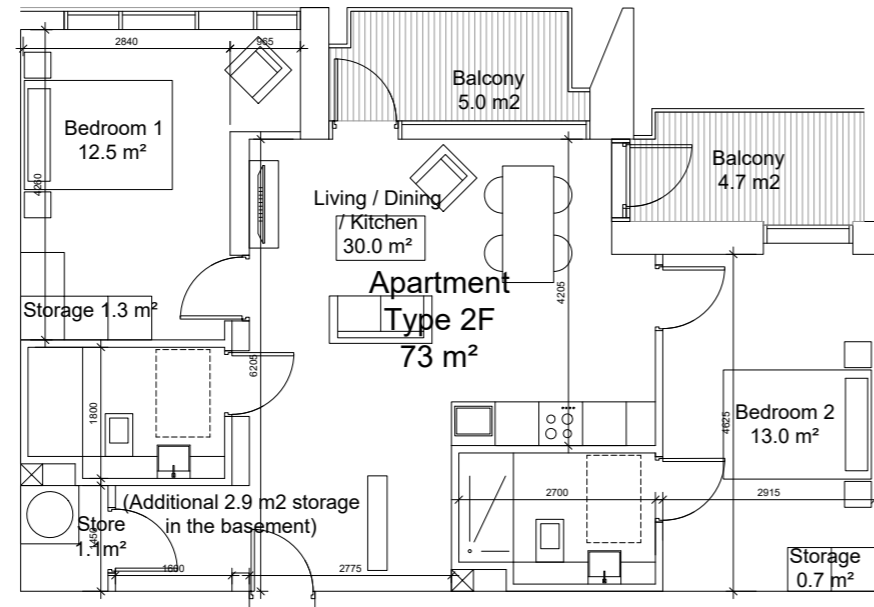
UNIT TYPE - 2C	
NAME	AREA
BEDROOM 1	13.0 SQM
BEDROOM 2	11.4 SQM
AGGREGATE BEDROOM AREA	24.4 SQM
COMBINED KITCHEN / LIVING AREA	34.1 SQM
AGGREGATE STORAGE	6.2 SQM
PRIVATE AMENITY SPACE	10.7 SQM
TOTAL APARTMENT AREA	79.8 SQM

03 2 Bed Apartment - Type 2C (3 units)
SCALE 1:50



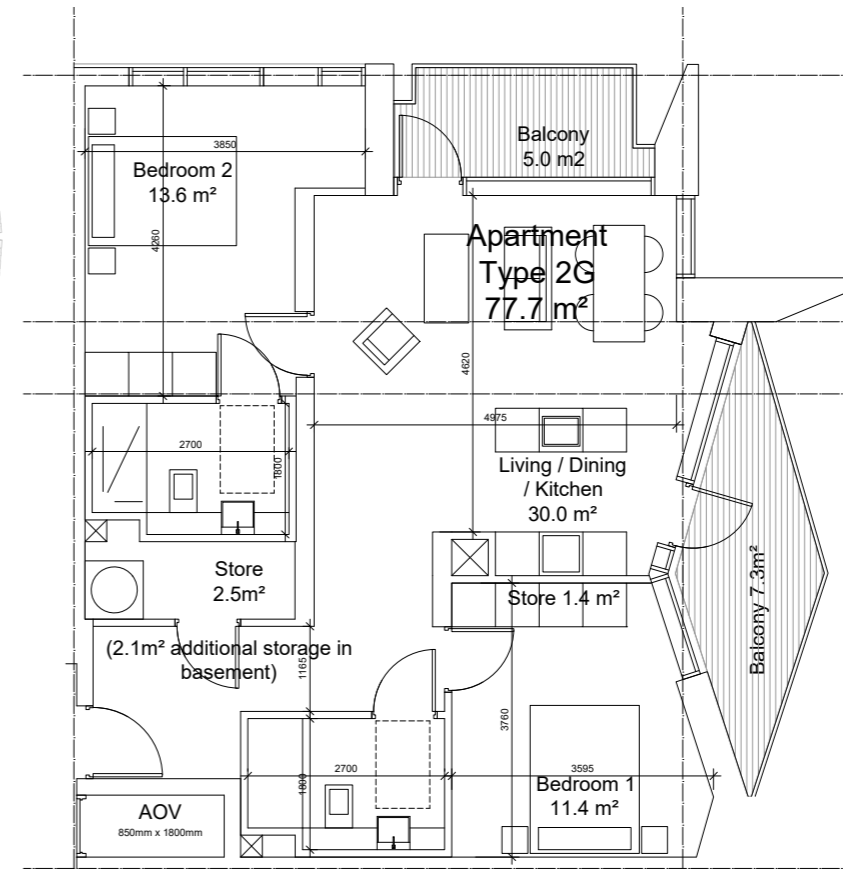
UNIT TYPE - 2D	
NAME	AREA
BEDROOM 1	12.5 SQM
BEDROOM 2	13.0 SQM
AGGREGATE BEDROOM AREA	25.5 SQM
COMBINED KITCHEN / LIVING AREA	30.0 SQM
AGGREGATE STORAGE	6.0 SQM
PRIVATE AMENITY SPACE	9.7 SQM
TOTAL APARTMENT AREA	73.0 SQM

04 2 Bed Apartment - Type 2D (4 Units)
SCALE 1:50



UNIT TYPE - 2F

NAME	AREA
BEDROOM 1	12.5 SQM
BEDROOM 2	13.0 SQM
AGGREGATE BEDROOM AREA	25.5 SQM
COMBINED KITCHEN / LIVING AREA	30.0 SQM
AGGREGATE STORAGE	6.0 SQM
PRIVATE AMENITY SPACE	9.7 SQM
TOTAL APARTMENT AREA	73.0 SQM

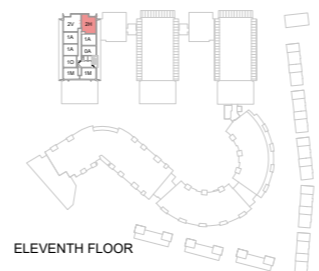
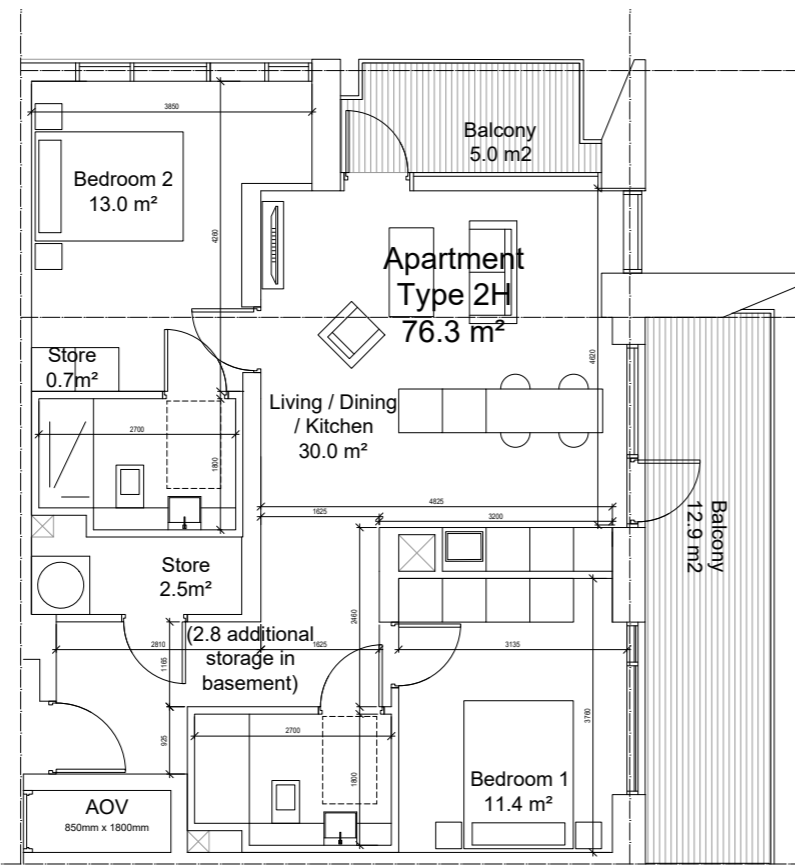


UNIT TYPE - 2G

NAME	AREA
BEDROOM 1	11.4 SQM
BEDROOM 2	13.6 SQM
AGGREGATE BEDROOM AREA	25.0 SQM
COMBINED KITCHEN / LIVING AREA	30.0 SQM
AGGREGATE STORAGE	6.0 SQM
PRIVATE AMENITY SPACE	12.3 SQM
TOTAL APARTMENT AREA	77.7 SQM

01 PL1924 2 Bed Apartment - Type 2F (2 Units) SCALE 1:50

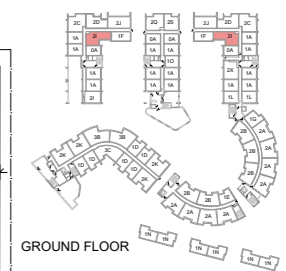
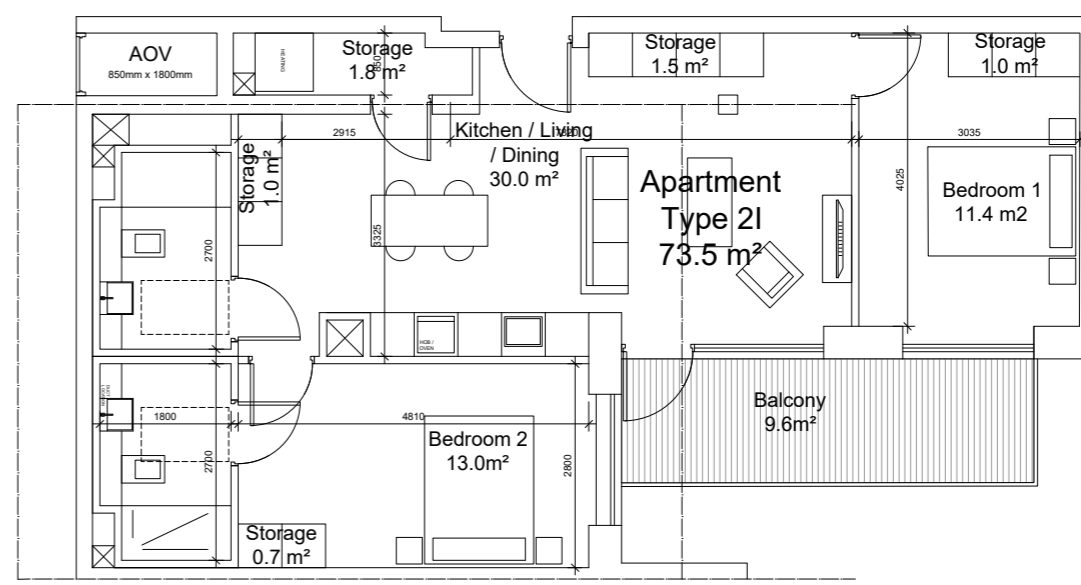
02 PL1924 2 Bed Apartment - Type 2G (10 Units) SCALE 1:50



UNIT TYPE - 2H

NAME	AREA
BEDROOM 1	11.4 SQM
BEDROOM 2	13.0 SQM
AGGREGATE BEDROOM AREA	24.4 SQM
COMBINED KITCHEN / LIVING AREA	30.0 SQM
AGGREGATE STORAGE	6.0 SQM
PRIVATE AMENITY SPACE	17.9 SQM
TOTAL APARTMENT AREA	76.3 SQM

03 PL1924 2 Bed Apartment - Type 2H (2 Units) SCALE 1:50

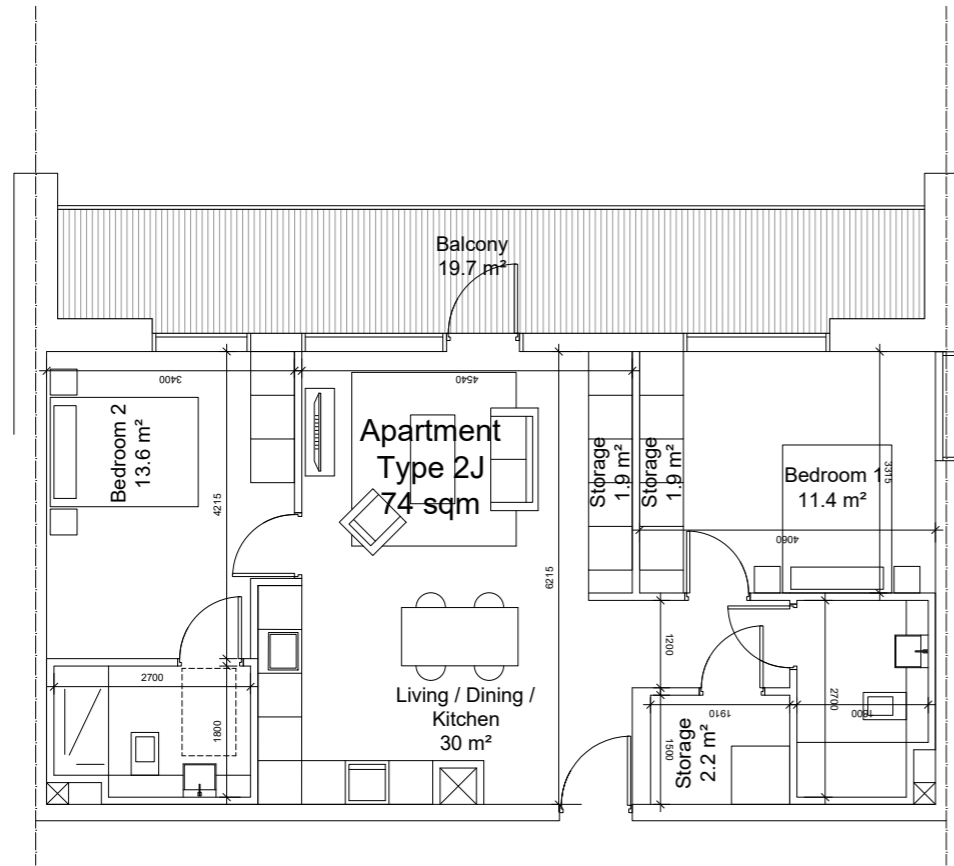


UNIT TYPE - 2I

NAME	AREA
BEDROOM 1	11.4 SQM
BEDROOM 2	13.0 SQM
AGGREGATE BEDROOM AREA	24.4 SQM
COMBINED KITCHEN / LIVING AREA	30.0 SQM
AGGREGATE STORAGE	6.0 SQM
PRIVATE AMENITY SPACE	9.6 SQM
TOTAL APARTMENT AREA	73.5 SQM

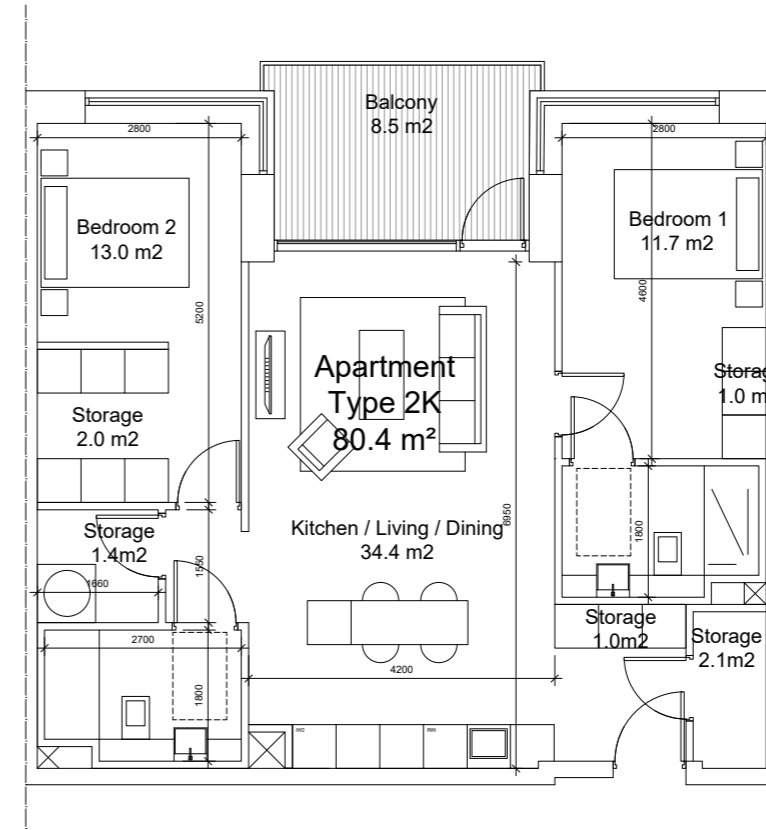
04 PL1924 2 Bed Apartment - Type 2I (6 Units) SCALE 1:50

* Please Refer to Drawing PL1924 For Further Detail



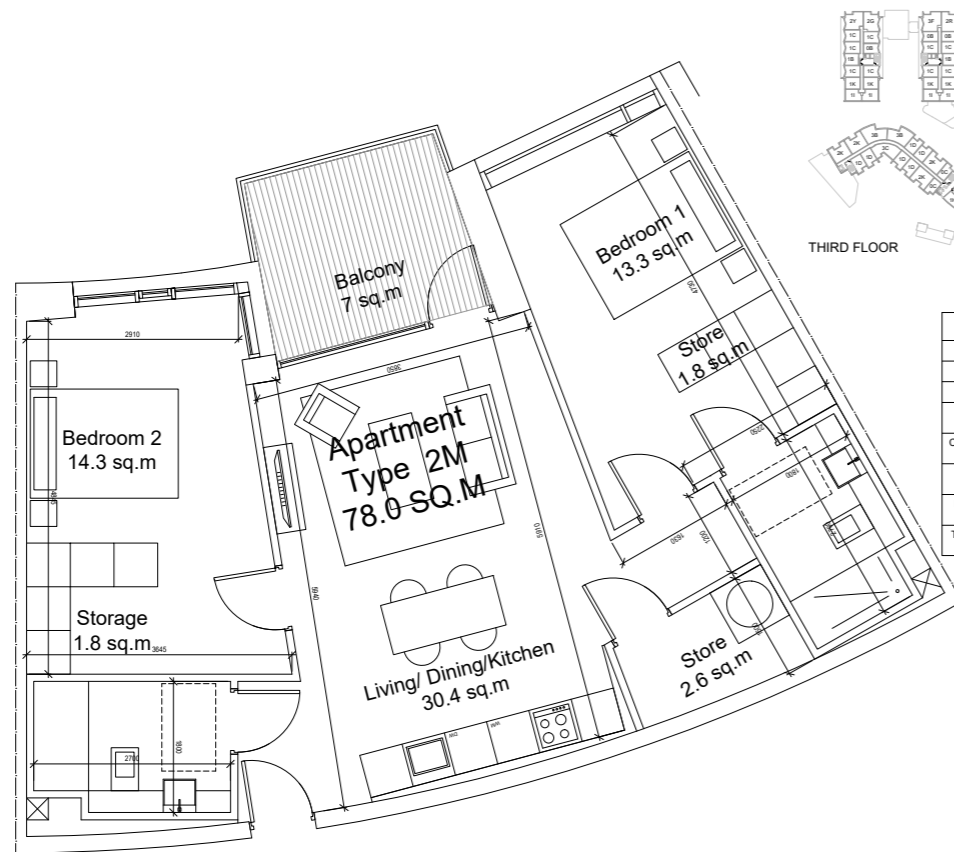
UNIT TYPE - 2J	
NAME	AREA
BEDROOM 1	11.4 SQM
BEDROOM 2	13.6 SQM
AGGREGATE BEDROOM AREA	25.0 SQM
COMBINED KITCHEN / LIVING AREA	30.0 SQM
AGGREGATE STORAGE	6.0 SQM
PRIVATE AMENITY SPACE	19.7 SQM
TOTAL APARTMENT AREA	74.0 SQM

01 2 Bed Apartment - Type 2J (6 units)
SCALE 1:50



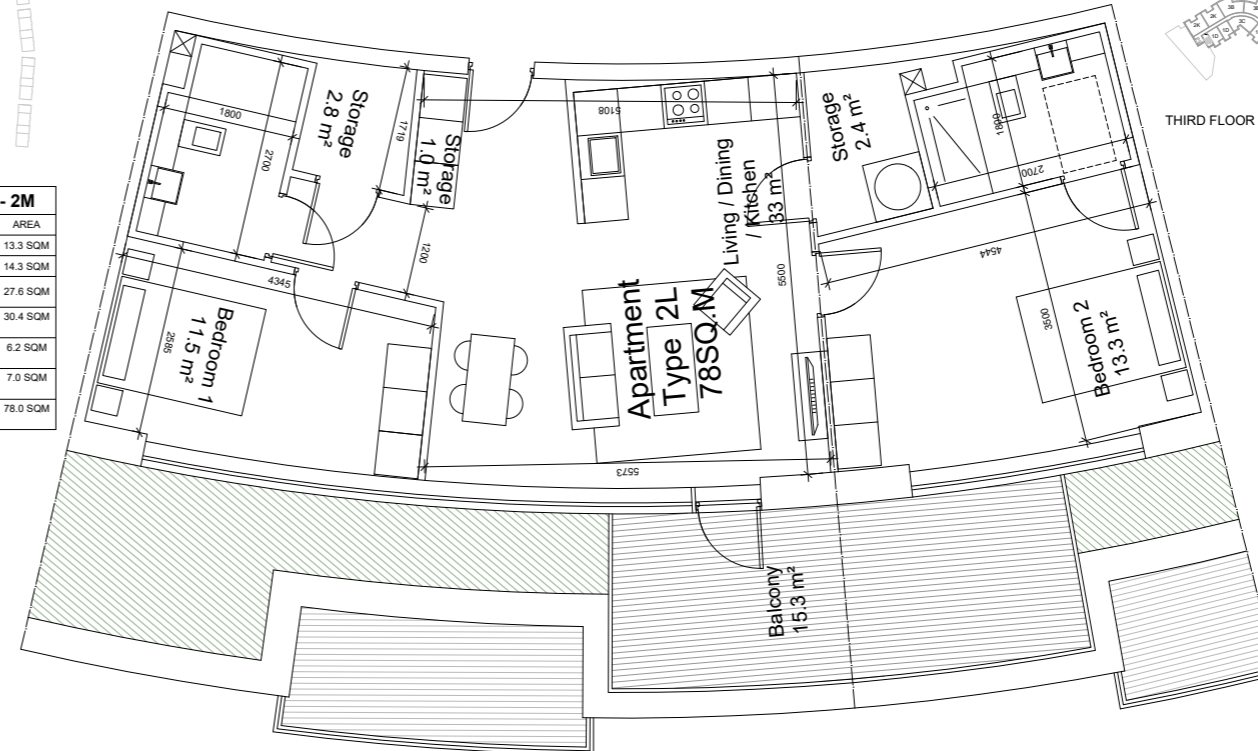
UNIT TYPE - 2K	
NAME	AREA
BEDROOM 1	11.7 SQM
BEDROOM 2	13.0 SQM
AGGREGATE BEDROOM AREA	24.7 SQM
COMBINED KITCHEN / LIVING AREA	34.4 SQM
AGGREGATE STORAGE	7.5 SQM
PRIVATE AMENITY SPACE	8.5 SQM
TOTAL APARTMENT AREA	80.4 SQM

02 2 Bed Apartment - Type 2K (16 Units)
SCALE 1:50



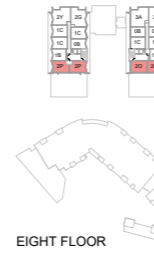
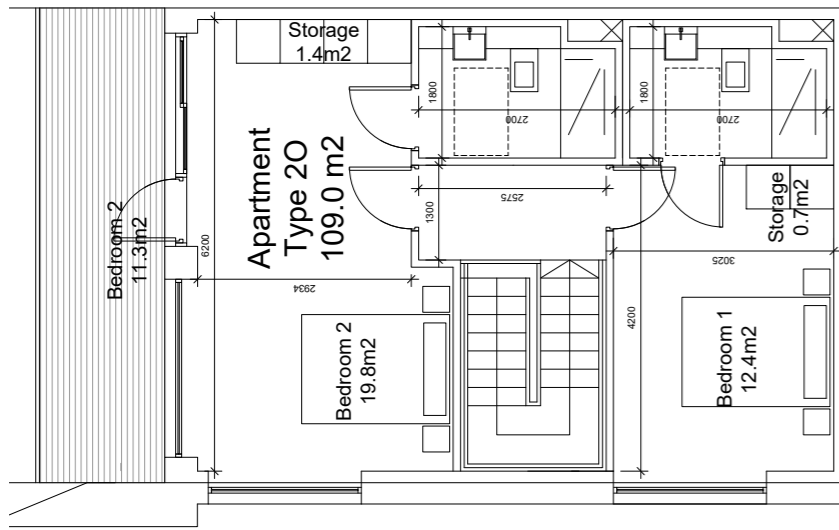
UNIT TYPE - 2M	
NAME	AREA
BEDROOM 1	13.3 SQM
BEDROOM 2	14.3 SQM
AGGREGATE BEDROOM AREA	27.6 SQM
COMBINED KITCHEN / LIVING AREA	30.4 SQM
AGGREGATE STORAGE	6.2 SQM
PRIVATE AMENITY SPACE	7.0 SQM
TOTAL APARTMENT AREA	78.0 SQM

03 2 Bed Apartment - Type 2M (12 units)
SCALE 1:50

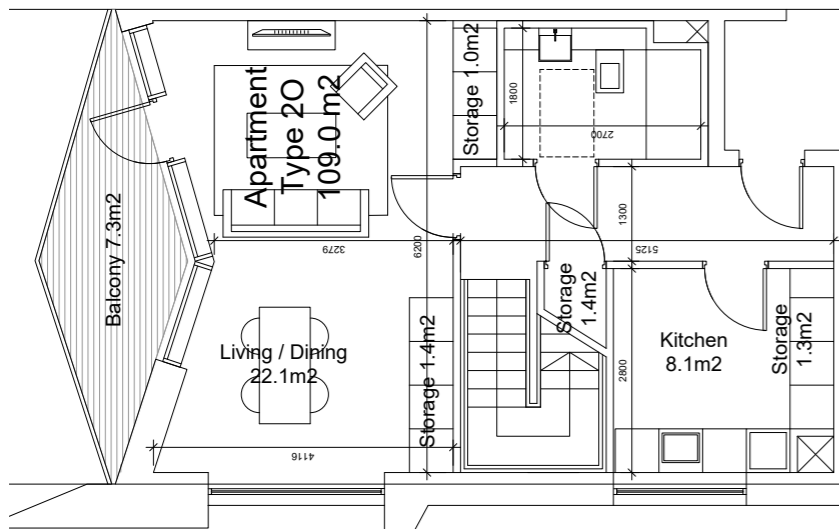


UNIT TYPE - 2L	
NAME	AREA
BEDROOM 1	11.5 SQM
BEDROOM 2	13.3 SQM
AGGREGATE BEDROOM AREA	24.8 SQM
COMBINED KITCHEN / LIVING AREA	33.0 SQM
AGGREGATE STORAGE	6.2 SQM
PRIVATE AMENITY SPACE	15.3 SQM
TOTAL APARTMENT AREA	78.0 SQM

04 2 Bed Apartment - Type 2L (4 units)
SCALE 1:50

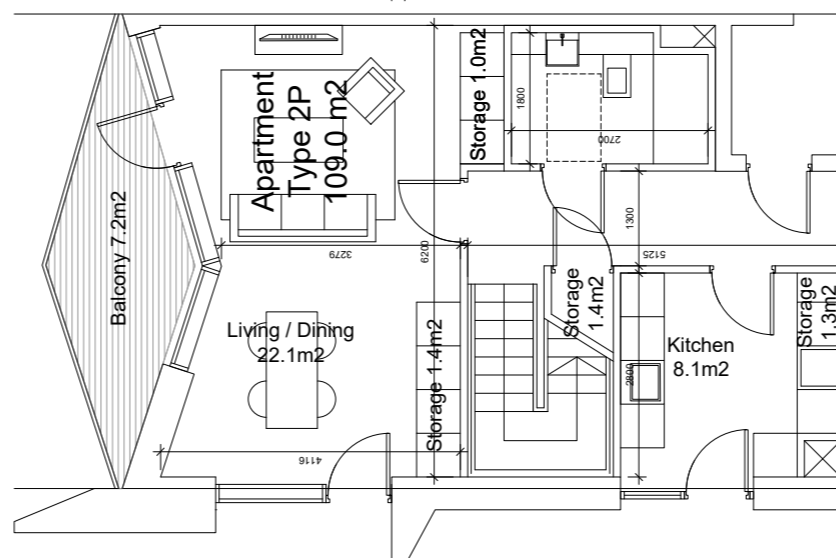
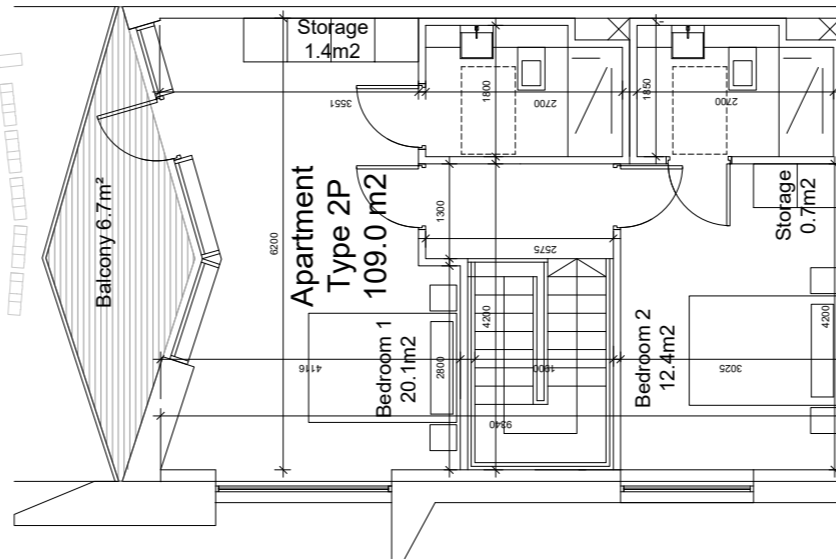


EIGHT FLOOR



NAME	AREA
BEDROOM 1	12.4 SQM
BEDROOM 2	19.8 SQM
AGGREGATE BEDROOM AREA	32.2 SQM
COMBINED KITCHEN / LIVING AREA	31.6 SQM
AGGREGATE STORAGE	7.2 SQM
PRIVATE AMENITY SPACE	18.6 SQM
TOTAL APARTMENT AREA	109.0 SQM

01 2 Bed Duplex Apartment - Type 2O (2 Units)
SCALE 1:50



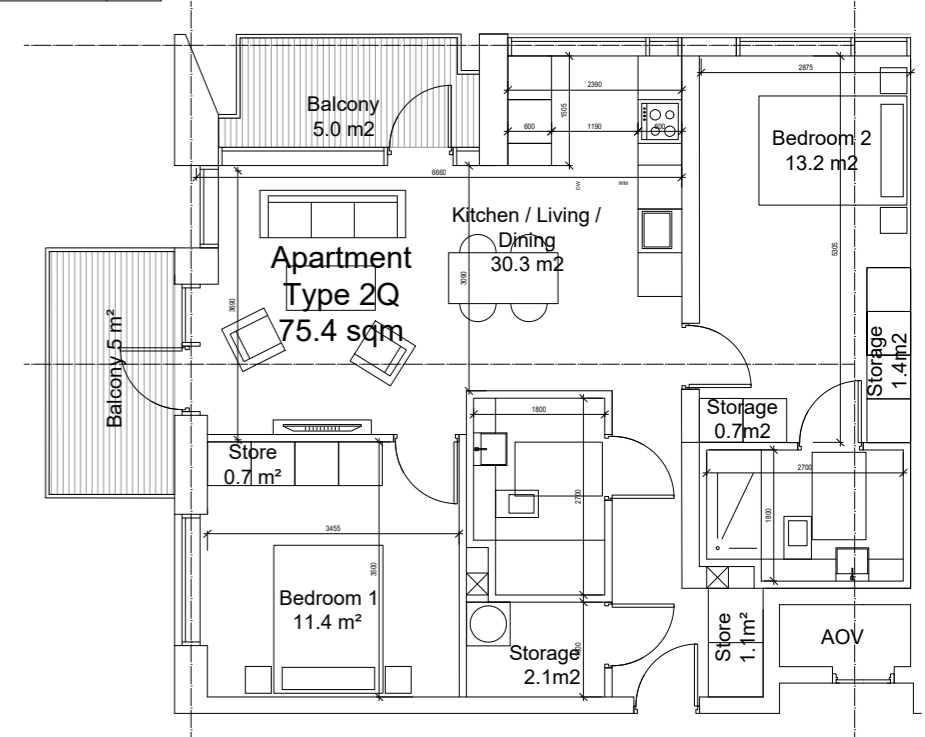
02 2 Bed Duplex Apartment - Type 2P (2 Units)
SCALE 1:50

NAME	AREA
BEDROOM 1	20.1 SQM
BEDROOM 2	12.4 SQM
AGGREGATE BEDROOM AREA	32.5 SQM
COMBINED KITCHEN / LIVING AREA	30.2 SQM
AGGREGATE STORAGE	7.2 SQM
PRIVATE AMENITY SPACE	13.4 SQM
TOTAL APARTMENT AREA	109.0 SQM

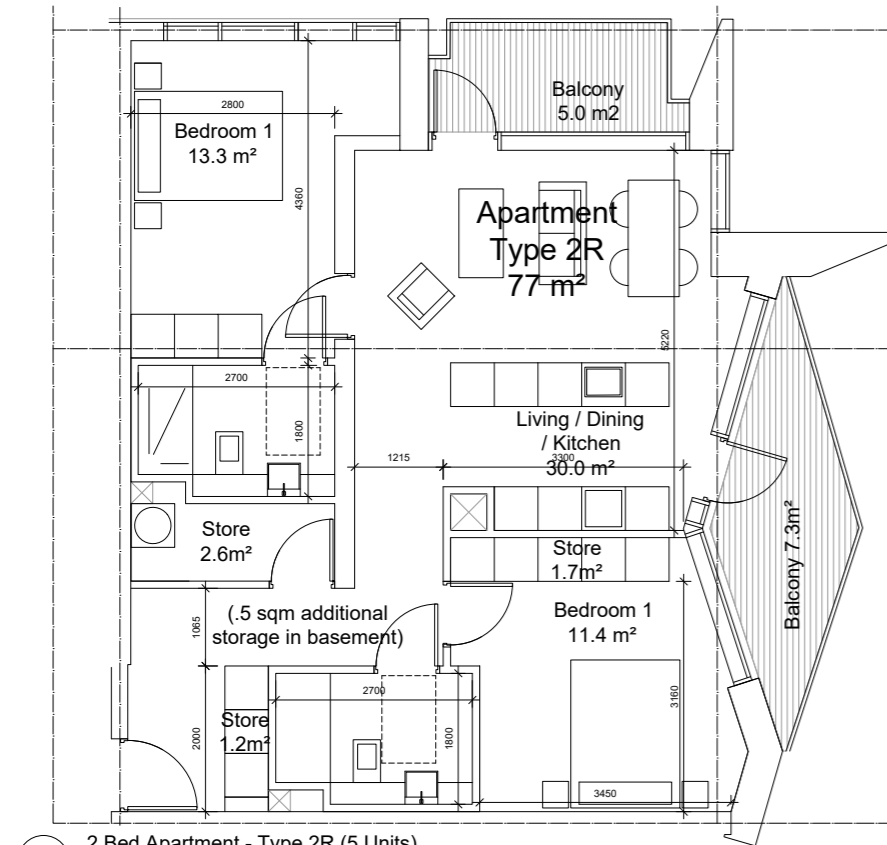


GROUND FLOOR

NAME	AREA
BEDROOM 1	11.4 SQM
BEDROOM 2	13.2 SQM
AGGREGATE BEDROOM AREA	24.6 SQM
COMBINED KITCHEN / LIVING AREA	30.3 SQM
AGGREGATE STORAGE	6.0 SQM
PRIVATE AMENITY SPACE	10.0 SQM
TOTAL APARTMENT AREA	75.4 SQM



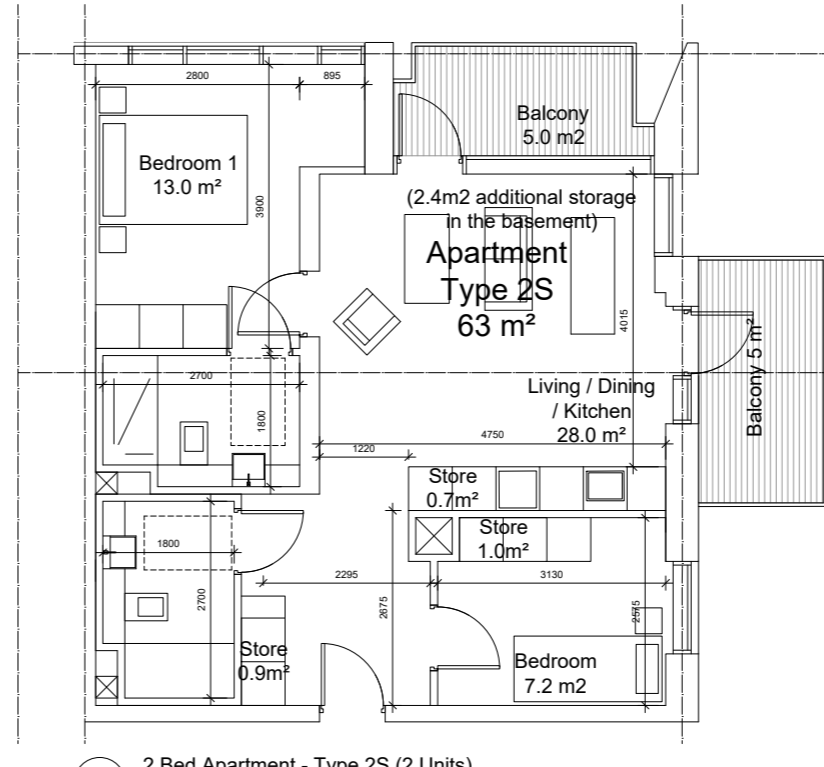
03 2 Bed Apartment - Type 2Q (2 Units)
SCALE 1:50



THIRD FLOOR

NAME	AREA
BEDROOM 1	11.4 SQM
BEDROOM 2	13.3 SQM
AGGREGATE BEDROOM AREA	24.7 SQM
COMBINED KITCHEN / LIVING AREA	30.0 SQM
AGGREGATE STORAGE	6.0 SQM
PRIVATE AMENITY SPACE	12.3 SQM
TOTAL APARTMENT AREA	77.0 SQM

04 2 Bed Apartment - Type 2R (5 Units)
SCALE 1:50



GROUND FLOOR

NAME	AREA
BEDROOM 1	13.0 SQM
BEDROOM 2	7.2 SQM
AGGREGATE BEDROOM AREA	20.2 SQM
COMBINED KITCHEN / LIVING AREA	28.0 SQM
AGGREGATE STORAGE	5.0 SQM
PRIVATE AMENITY SPACE	10.0 SQM
TOTAL APARTMENT AREA	63.0 SQM

05 2 Bed Apartment - Type 2S (2 Units)
SCALE 1:50

* Please Refer to Drawing PL1926 For Further Detail

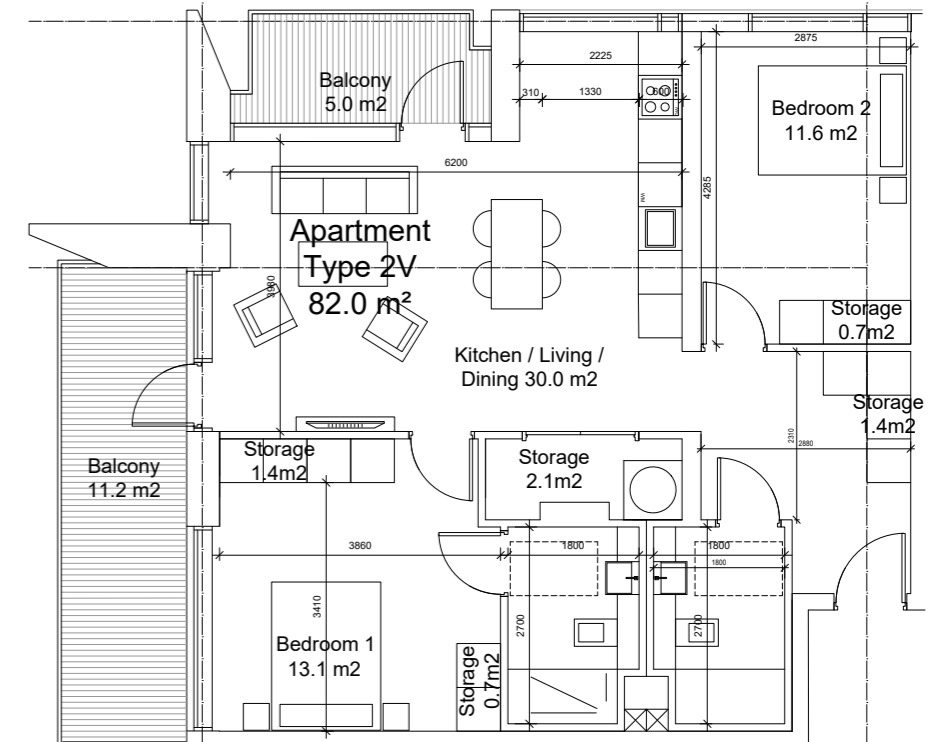
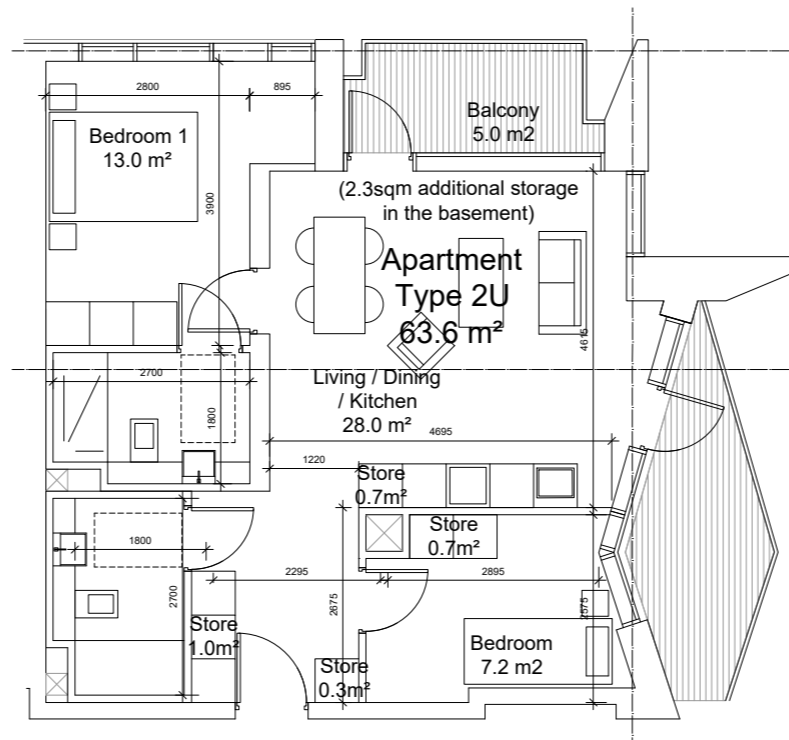
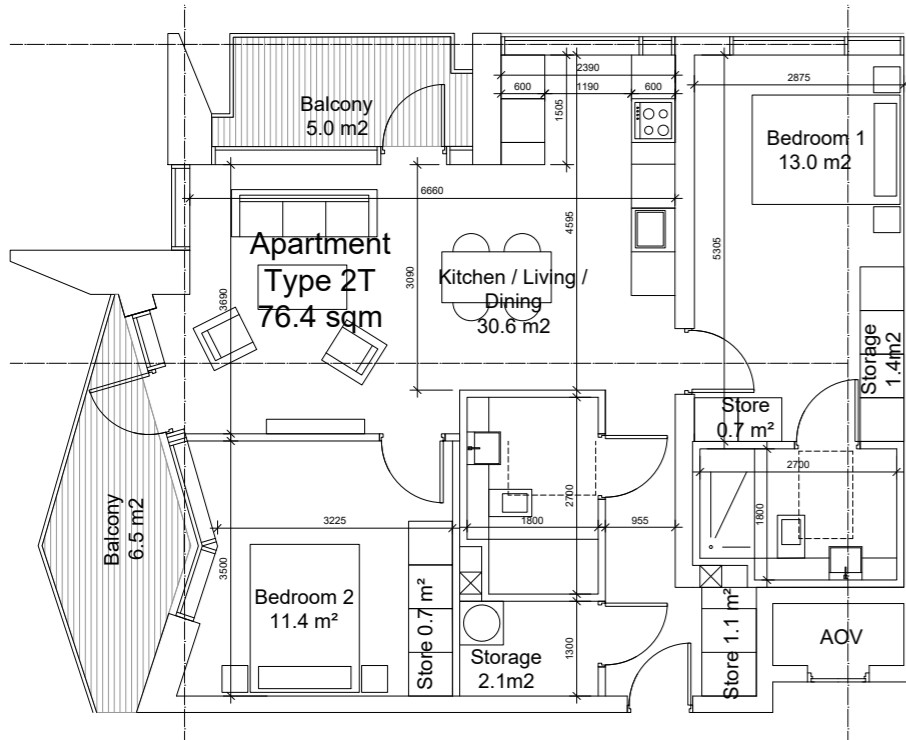
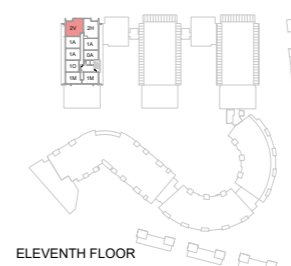
UNIT TYPE - 2T	
NAME	AREA
BEDROOM 1	11.4 SQM
BEDROOM 2	13.0 SQM
AGGREGATE BEDROOM AREA	24.4 SQM
COMBINED KITCHEN / LIVING AREA	30.6 SQM
AGGREGATE STORAGE	6.1 SQM
PRIVATE AMENITY SPACE	11.5 SQM
TOTAL APARTMENT AREA	76.4 SQM



UNIT TYPE - 2U	
NAME	AREA
BEDROOM 1	13.0 SQM
BEDROOM 2	7.2 SQM
AGGREGATE BEDROOM AREA	20.2 SQM
COMBINED KITCHEN / LIVING AREA	28.0 SQM
AGGREGATE STORAGE	6.0 SQM
PRIVATE AMENITY SPACE	11.9 SQM
TOTAL APARTMENT AREA	63.6 SQM



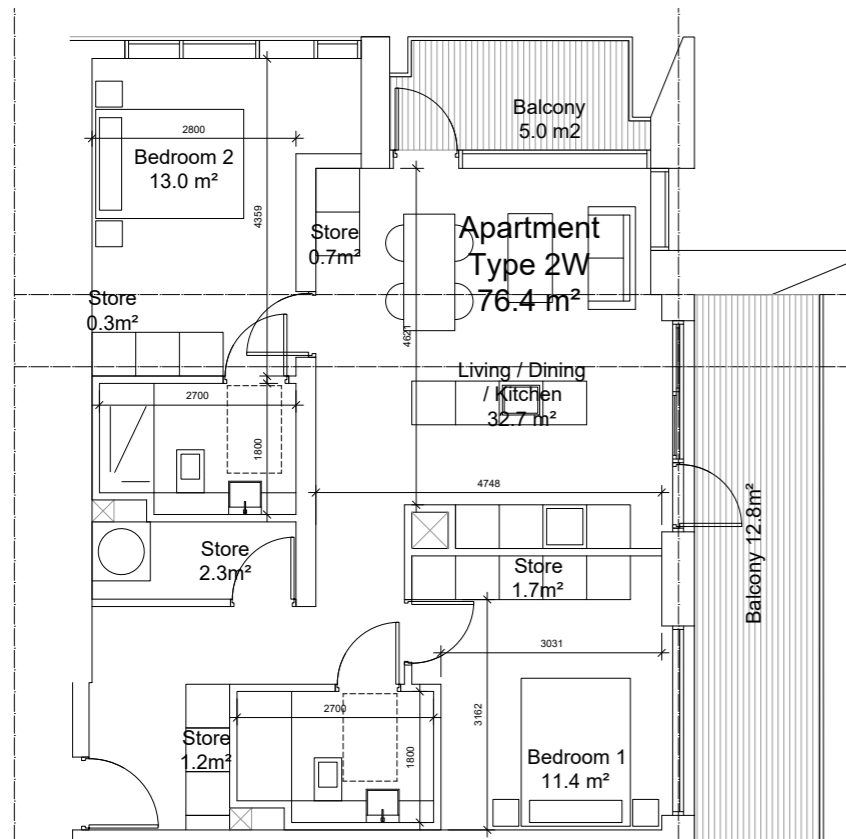
UNIT TYPE - 2V	
NAME	AREA
BEDROOM 1	11.6 SQM
BEDROOM 2	13.1 SQM
AGGREGATE BEDROOM AREA	24.5 SQM
COMBINED KITCHEN / LIVING AREA	30.0 SQM
AGGREGATE STORAGE	6.2 SQM
PRIVATE AMENITY SPACE	16.2 SQM
TOTAL APARTMENT AREA	82.0 SQM



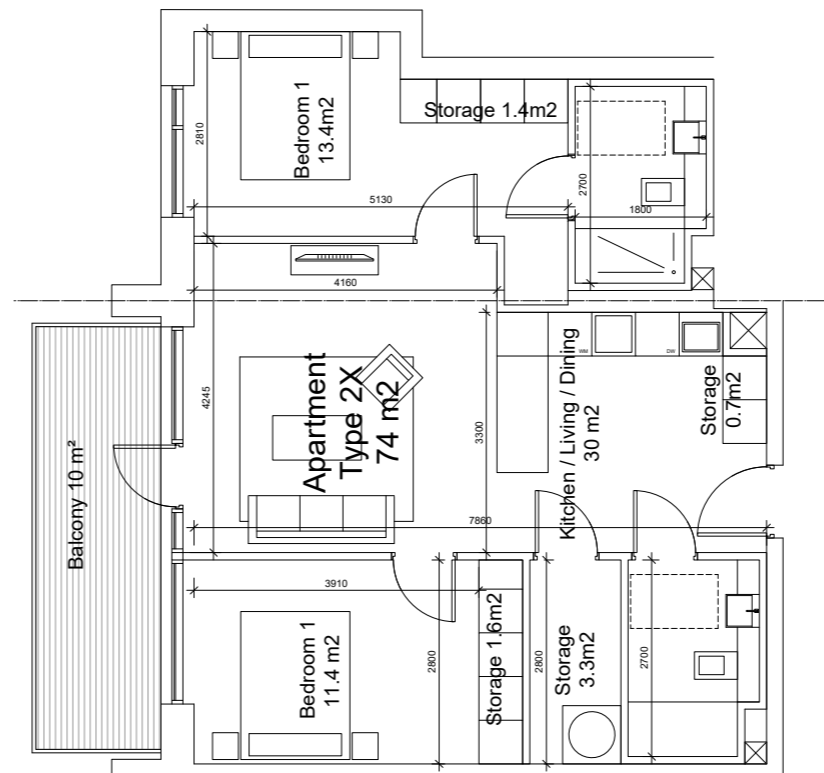
01 PL1927 2 Bed Apartment - Type 2T (1 Unit)
SCALE 1:50

02 PL1927 2 Bed Apartment - Type 2U (1 Units)
SCALE 1:50

03 PL1927 2 Bed Apartment - Type 2V (2 Units)
SCALE 1:50



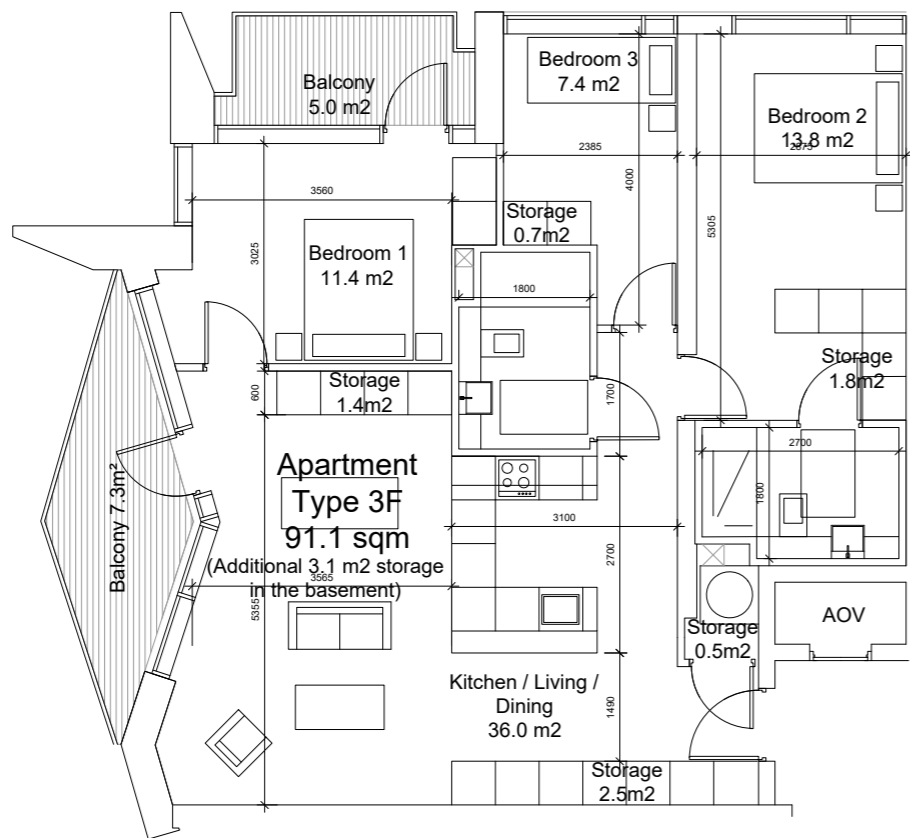
UNIT TYPE - 2W	
NAME	AREA
BEDROOM 1	11.4 SQM
BEDROOM 2	13.0 SQM
AGGREGATE BEDROOM AREA	24.4 SQM
COMBINED KITCHEN / LIVING AREA	32.7 SQM
AGGREGATE STORAGE	6.2 SQM
PRIVATE AMENITY SPACE	17.8 SQM
TOTAL APARTMENT AREA	76.4 SQM



UNIT TYPE - 2X	
NAME	AREA
BEDROOM 1	11.4 SQM
BEDROOM 2	13.4 SQM
AGGREGATE BEDROOM AREA	24.8 SQM
COMBINED KITCHEN / LIVING AREA	30.0 SQM
AGGREGATE STORAGE	7.0 SQM
PRIVATE AMENITY SPACE	10.0 SQM
TOTAL APARTMENT AREA	74.0 SQM

04 PL1927 2 Bed Apartment - Type 2W (1 Units)
SCALE 1:50

05 PL1927 2 Bed Apartment - Type 2X (1 Units)
SCALE 1:50

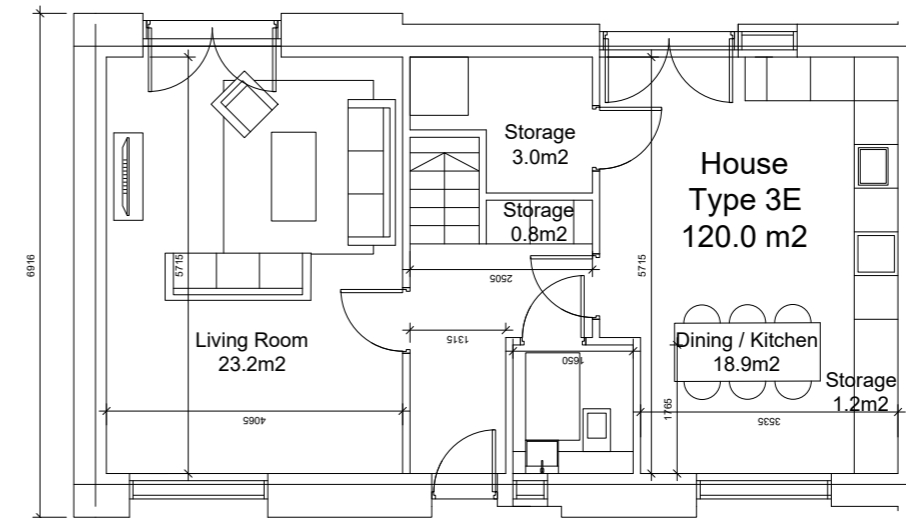
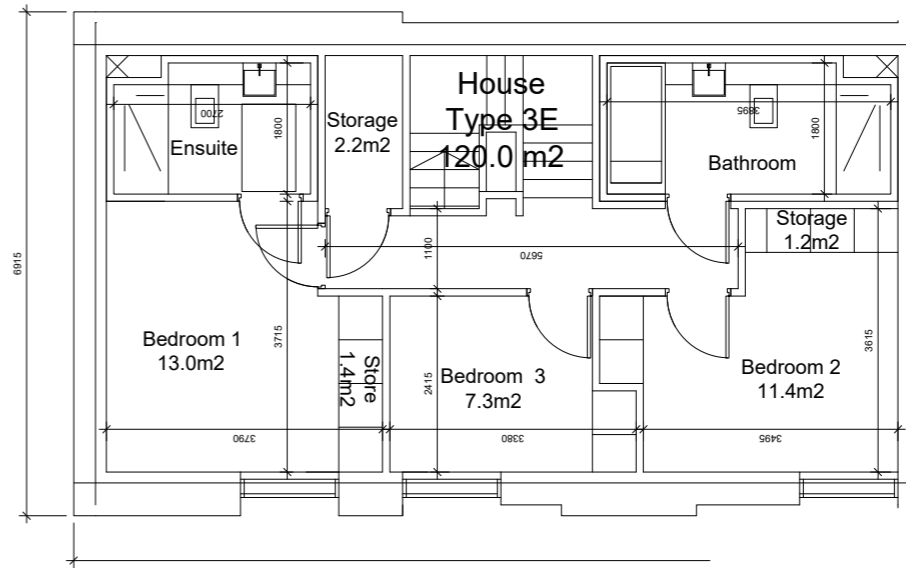


01
PL1929
3 Bed Apartment - Type 3F (5 Units)
SCALE 1:50



THIRD FLOOR

UNIT TYPE - 3F	
NAME	AREA
BEDROOM 1	11.4 SQM
BEDROOM 2	13.8 SQM
BEDROOM 3	7.4 SQM
AGGREGATE BEDROOM AREA	32.6 SQM
COMBINED KITCHEN / LIVING AREA	36.0 SQM
AGGREGATE STORAGE	9.0 SQM
PRIVATE AMENITY SPACE	12.3 SQM
TOTAL APARTMENT AREA	91.1 SQM

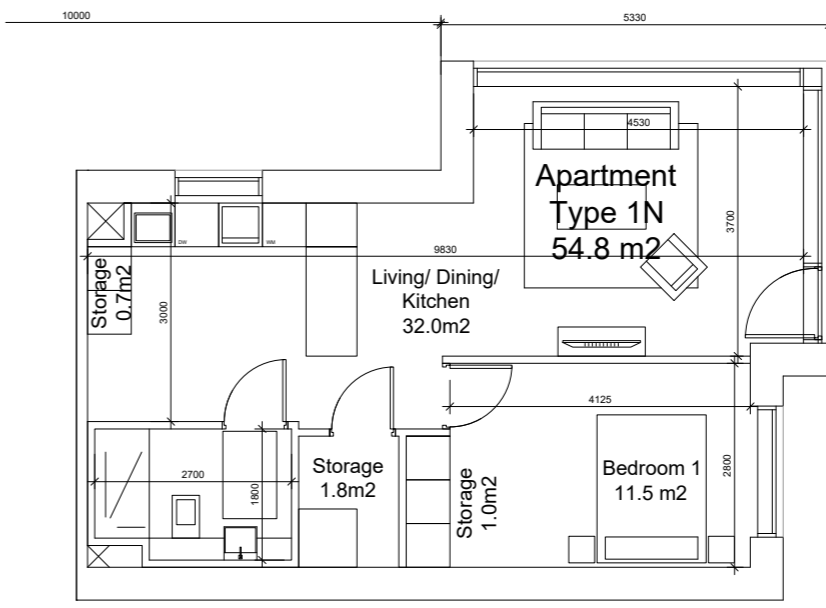


03
PL1929
3 Bed House - Type 3E (10 Units)
SCALE 1:50

UNIT TYPE - 3E	
NAME	AREA
BEDROOM 1	13.0 SQM
BEDROOM 2	11.4 SQM
BEDROOM 3	7.3 SQM
AGGREGATE BEDROOM AREA	31.7 SQM
COMBINED KITCHEN / LIVING AREA	42.1 SQM
AGGREGATE STORAGE	9.8 SQM
PRIVATE AMENITY SPACE	VARIES
TOTAL APARTMENT AREA	120.0 SQM



GROUND FLOOR



02
PL1929
1 Bed House - Type 1N (6 Units)
SCALE 1:50

UNIT TYPE - 1N	
NAME	AREA
BEDROOM 1	11.5 SQM
COMBINED KITCHEN / LIVING AREA	32.0 SQM
AGGREGATE STORAGE	3.5 SQM
PRIVATE AMENITY SPACE	VARIES
TOTAL APARTMENT AREA	54.8 SQM



GROUND FLOOR

